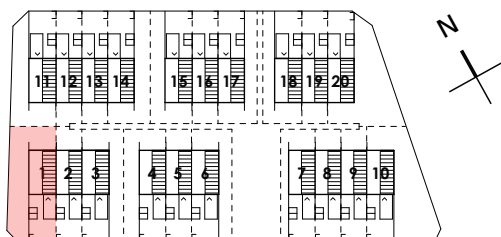
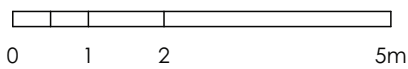


# Talldungen

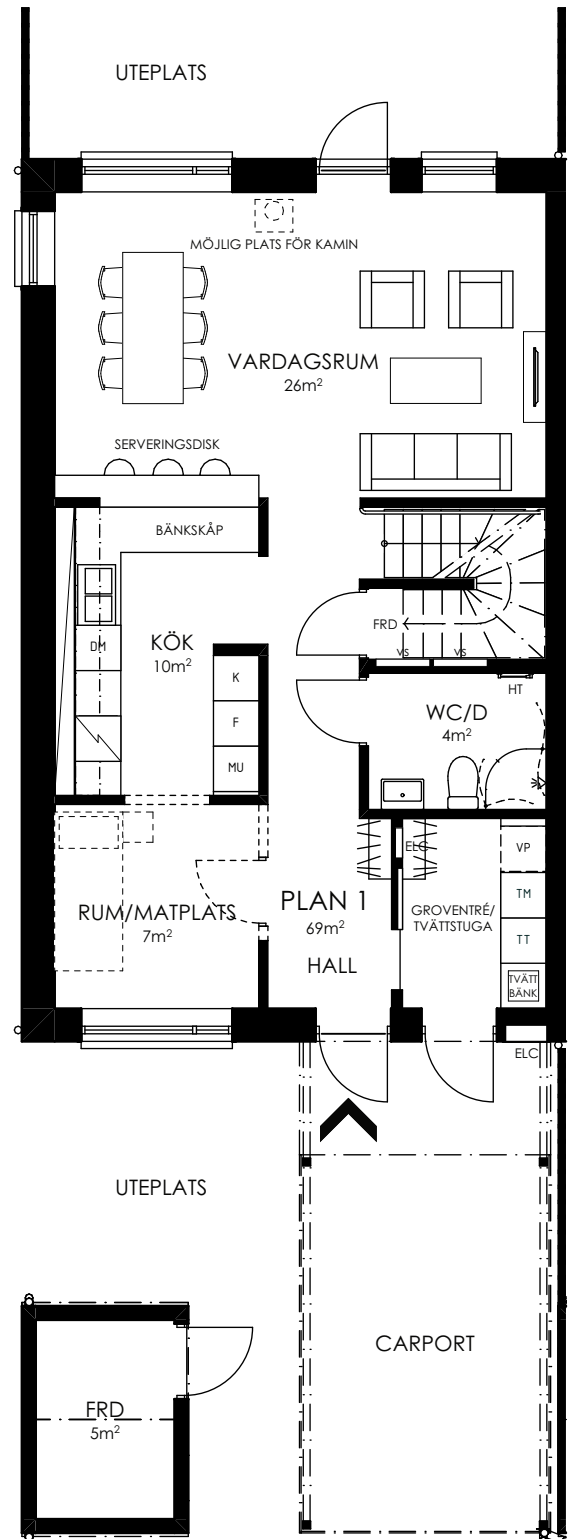


HUS: 1  
 PLAN: 1  
 5 ROK, CA 140 KVM  
 TOMTAREA: 381 KVM  
 SKALA 1:100

-  ENTRÉ
-  KAPPHYLLA
-  TVÄTTMASKIN
-  TORKTUMLARE
-  VÄRMEPUMP
-  DISKMASKIN
-  KYL
-  FRYS
-  MIKRO OCH INBYGGNADSUGN
-  SPISHÄLL
-  LINNESKÅP
-  GARDEROB
-  FRD FÖRRÅD
-  KKK KLÄDKAMMARE
-  VS SKÅP FÖR RÖRKOPPLINGAR
-  ELC ELCENTRAL
-  HT HANDDUKSTORK
-  ==> TILLVALSVÄGG



ORIENTERINGSFIGUR 2021-03-29

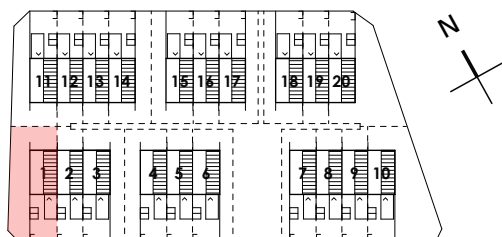
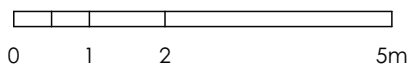
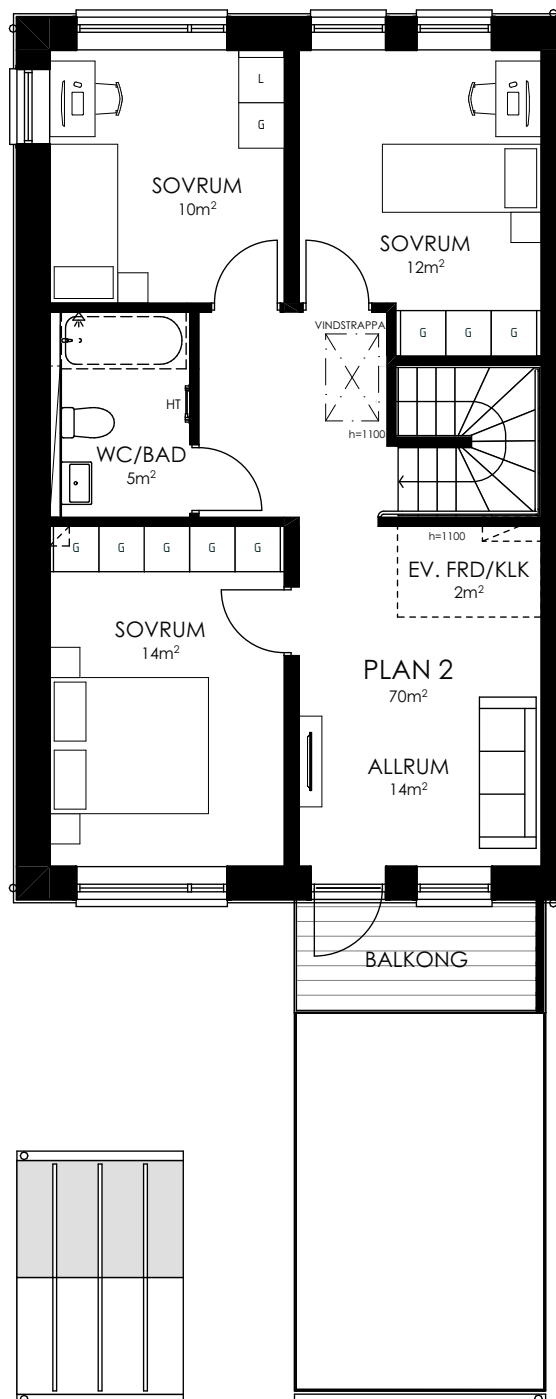


ENTRÉPLAN

# Talldungen



HUS: 1  
PLAN: 2  
5 ROK, CA 140 KVM  
TOMTAREA: 381 KVM  
SKALA 1:100



ORIENTERINGSFIGUR 2021-03-29

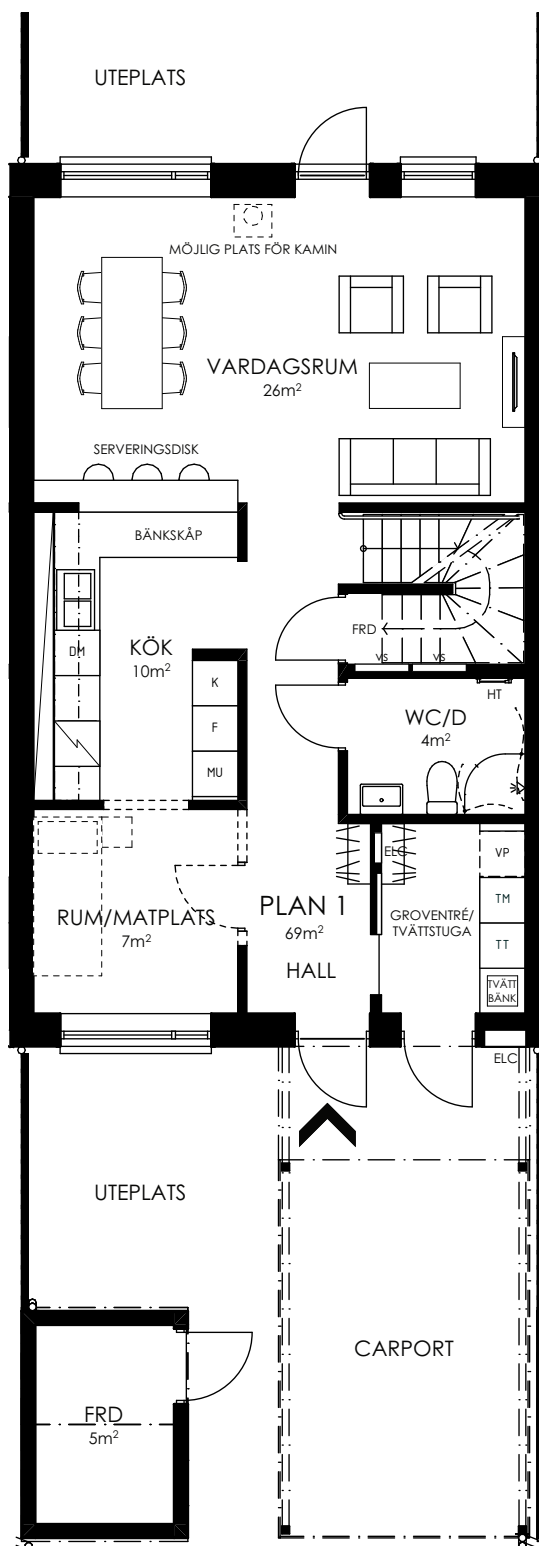
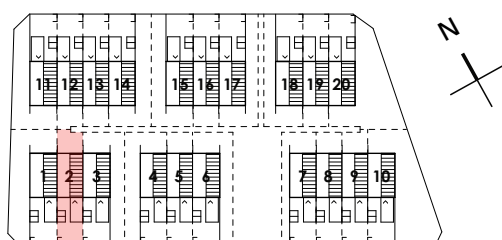
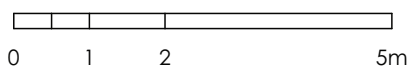
PLAN 2

# Talldungen



HUS: 2  
 PLAN: 1  
 5 ROK, CA 140 KVM  
 TOMTAREA: 206 KVM  
 SKALA 1:100

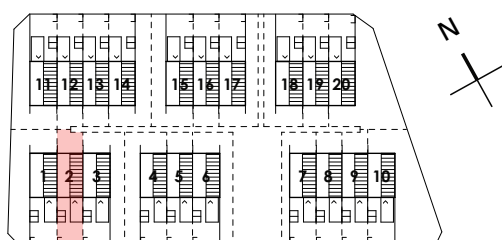
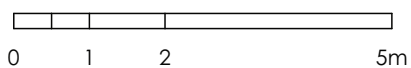
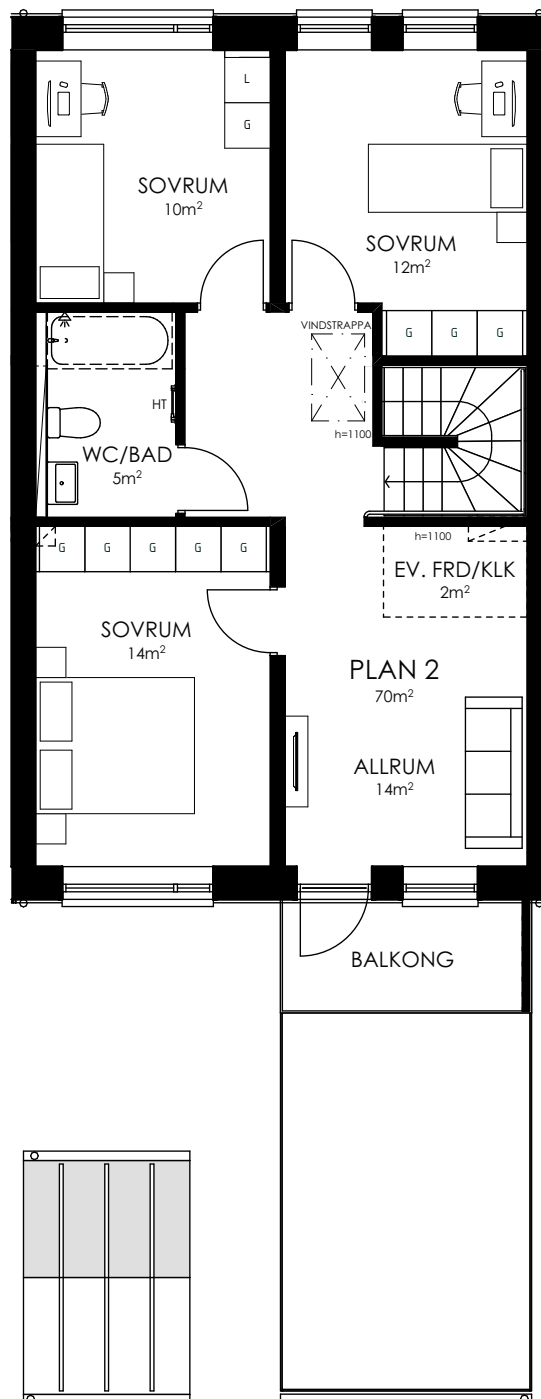
- ENTRÉ
- KAPPHYLLA
- TVÄTTMASKIN
- TORKTUMLARE
- VÄRMEPUMP
- DISKMASKIN
- KYL
- FRYSS
- MIKRO OCH INBYGGNADSUGN
- SPISHÄLL
- LINNESKÅP
- GARDEROB
- FÖRRÅD
- KLÄDKAMMARE
- SKÅP FÖR RÖRKOPPLINGAR
- ELCENTRAL
- HANDDUKTORK
- TILLVALSVÄGG



# Talldungen



HUS: 2  
PLAN: 2  
5 ROK, CA 140 KVM  
TOMTAREA: 206 KVM  
SKALA 1:100



ORIENTERINGSFIGUR 2021-03-29

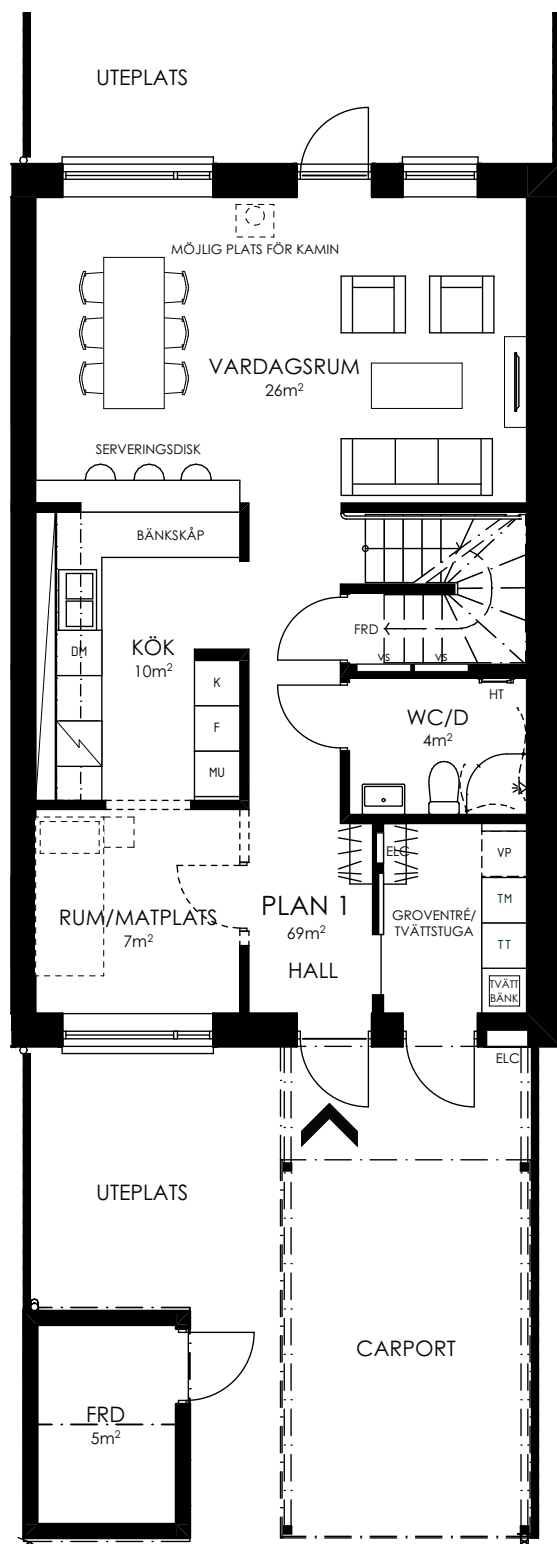
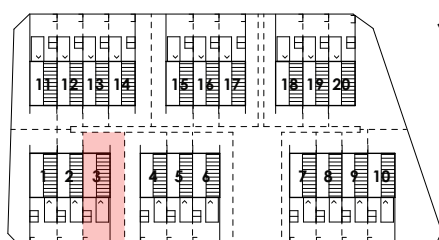
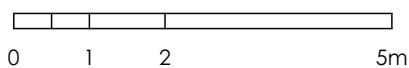
PLAN 2

# Talldungen



HUS: 3  
 PLAN: 1  
 5 ROK, CA 140 KVM  
 TOMTAREA: 328 KVM  
 SKALA 1:100

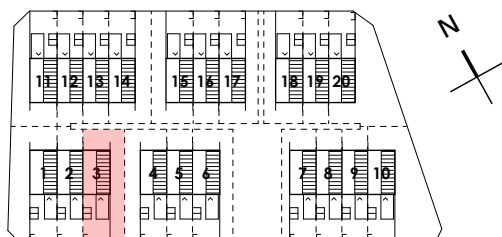
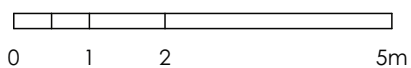
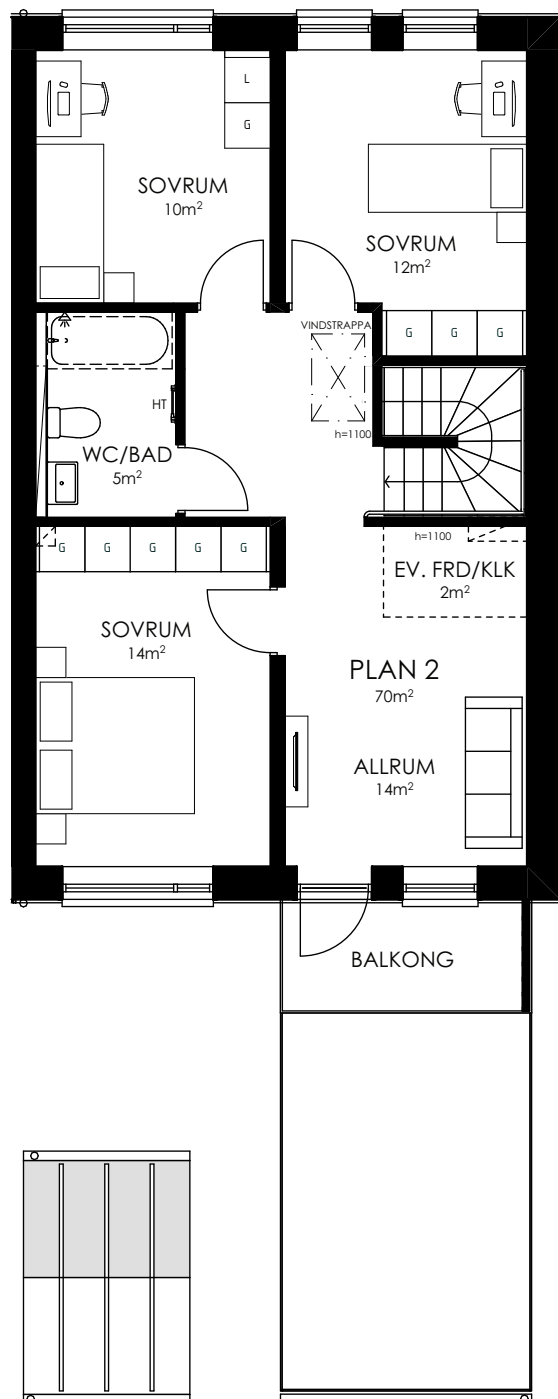
- ENTRÉ
- KAPPHYLLA
- TVÄTTMASKIN
- TORKTUMLARE
- VÄRMEPUMP
- DISKMASKIN
- KYL
- FRYS
- MIKRO OCH INBYGGNADSUGN
- SPISHÄLL
- LINNESKÅP
- GARDEROB
- FÖRRÅD
- KLÄDKAMMARE
- SKÅP FÖR RÖRKOPPLINGAR
- ELCENTRAL
- HANDDUKTORK
- TILLVALSVÄGG



# Talldungen



HUS: 3  
PLAN: 2  
5 ROK, CA 140 KVM  
TOMTAREA: 328 KVM  
SKALA 1:100



ORIENTERINGSFIGUR 2021-03-29

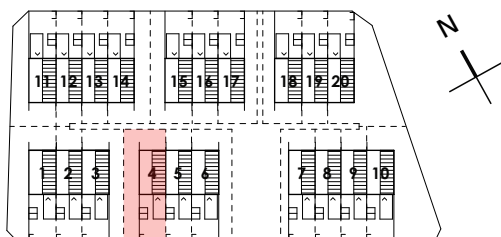
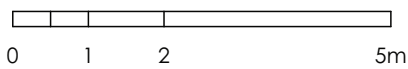
PLAN 2

# Talldungen

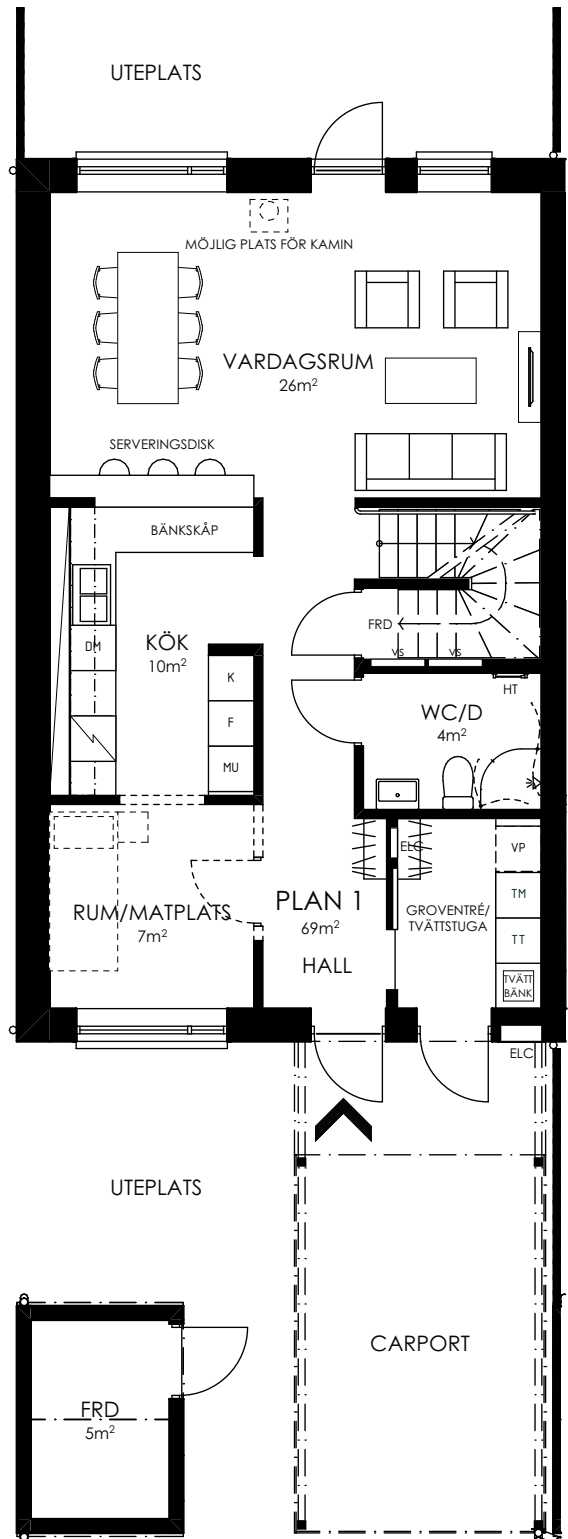


HUS: 4  
 PLAN: 1  
 5 ROK, CA 140 KVM  
 TOMTAREA: 331 KVM  
 SKALA 1:100

- ENTRÉ
- KAPPHYLLA
- TVÄTTMASKIN
- TORKTUMLARE
- VÄRMEPUMP
- DISKMASKIN
- KYL
- FRYS
- MIKRO OCH INBYGGNADSUGN
- SPISHÄLL
- LINNESKÅP
- GARDEROB
- FÖRRÅD
- KLÄDKAMMARE
- SKÅP FÖR RÖRKOPPLINGAR
- ELCENTRAL
- HANDDUKSTORK
- TILLVALSVÄGG



ORIENTERINGSFIGUR 2021-03-29

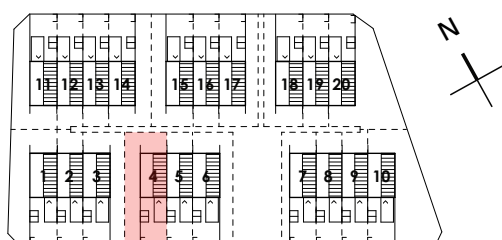
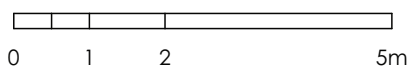
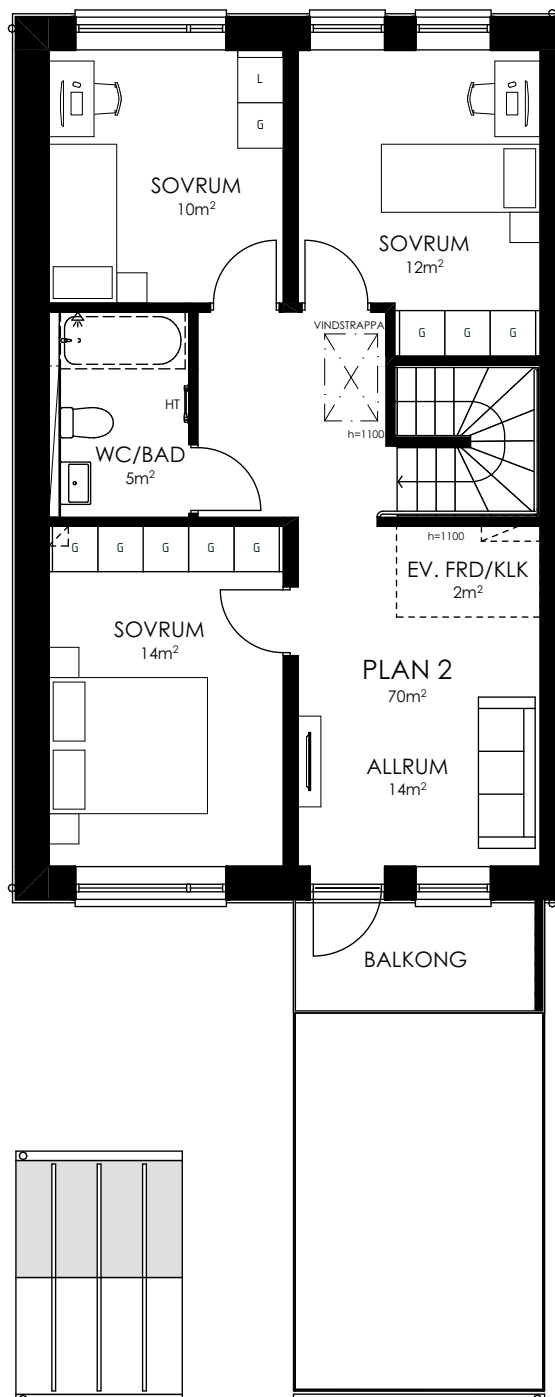


ENTRÉPLAN

# Talldungen



HUS: 4  
PLAN: 2  
5 ROK, CA 140 KVM  
TOMTAREA: 331 KVM  
SKALA 1:100



2021-03-29

PLAN 2

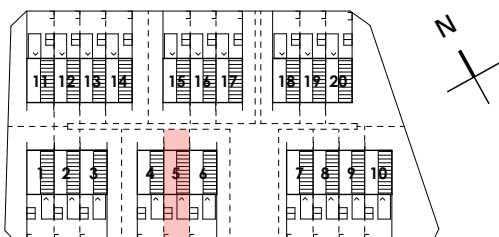
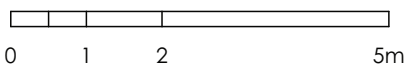


# Taldungen

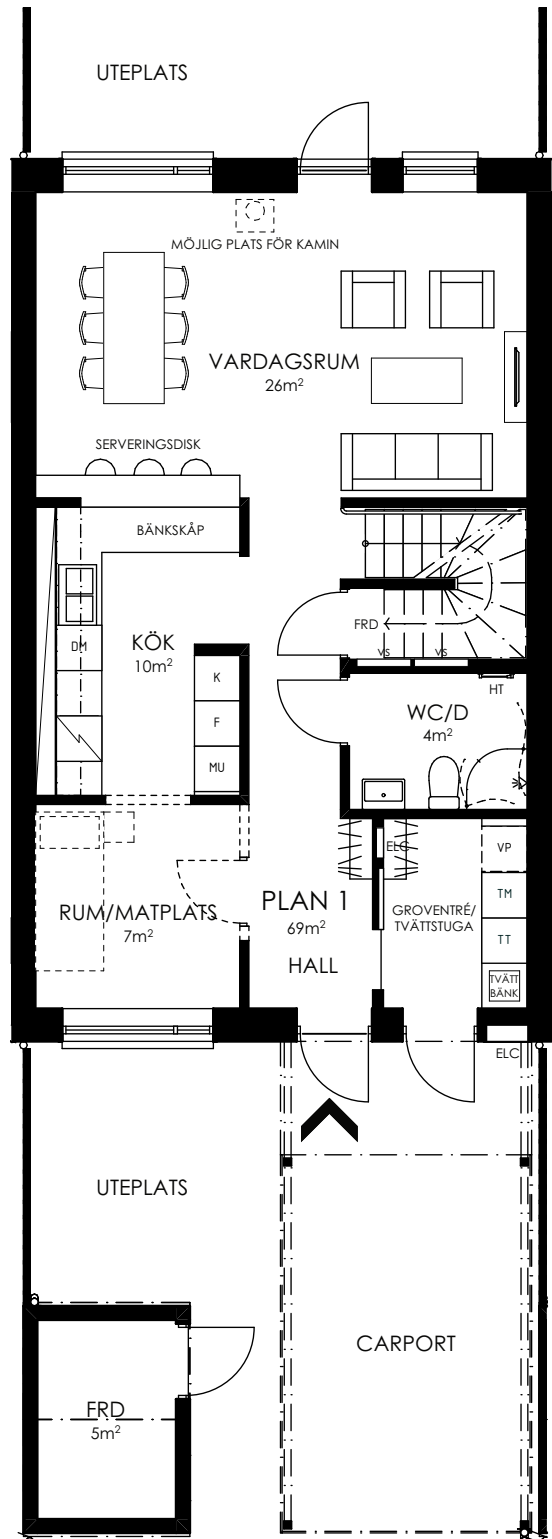


HUS: 5  
 PLAN: 1  
 5 ROK, CA 140 KVM  
 TOMTAREA: 203 KVM  
 SKALA 1:100

-  ENTRÉ
-  KAPPHYLLA
-  TVÄTTMASKIN
-  TORKTUMLARE
-  VÄRMEPUMP
-  DISKMASKIN
-  KYL
-  FRYSS
-  MIKRO OCH INBYGGNADSUGN
-  SPISHÄLL
-  LINNESKÅP
-  GARDEROB
-  FÖRRÅD
-  KLÄDKAMMARE
-  SKÅP FÖR RÖRKOPPLINGAR
-  ELCENTRAL
-  HANDDUKSTORK
-  TILLVALSVÄGG



ORIENTERINGSFIGUR 2021-03-29

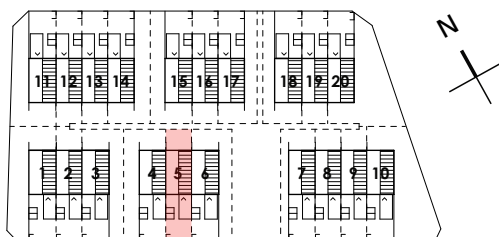
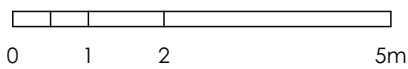
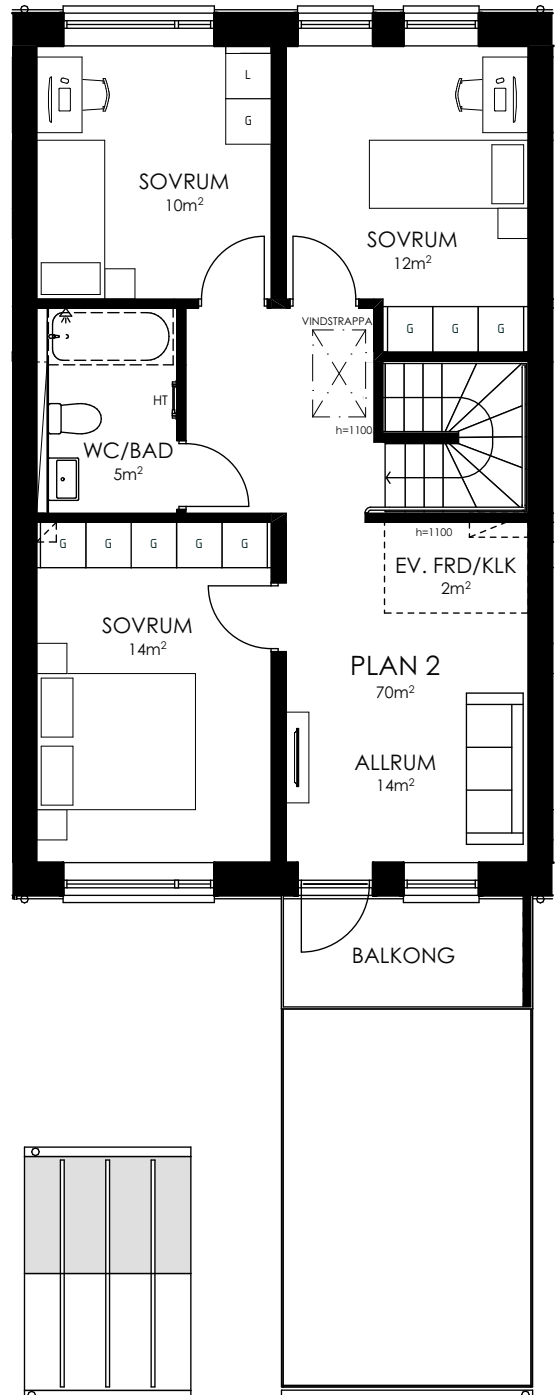


ENTRÉPLAN

# Talldungen



HUS: 5  
PLAN: 2  
5 ROK, CA 140 KVM  
TOMTAREA: 203 KVM  
SKALA 1:100



ORIENTERINGSFIGUR 2021-03-29

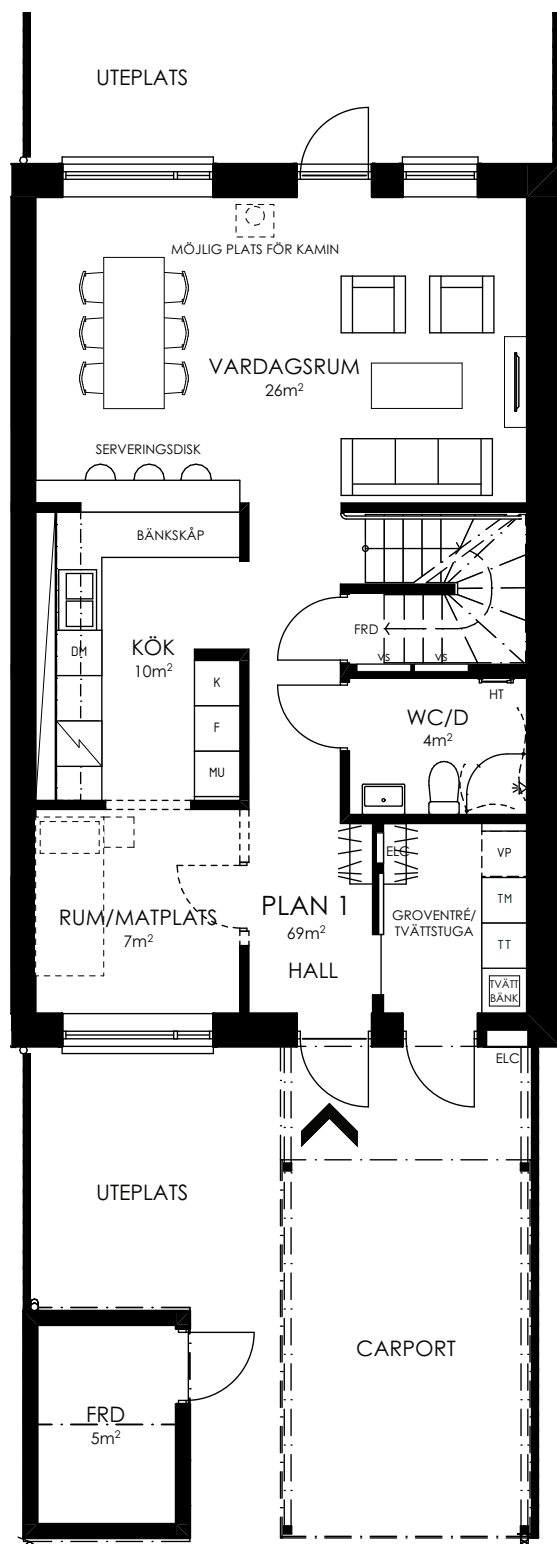
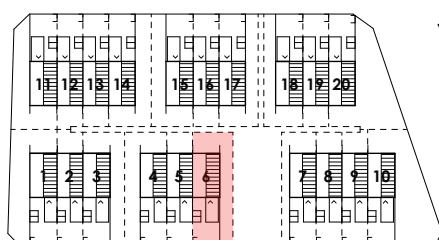
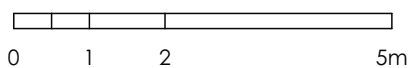
PLAN 2

# Talldungen



HUS: 6  
 PLAN: 1  
 5 ROK, CA 140 KVM  
 TOMTAREA: 317 KVM  
 SKALA 1:100

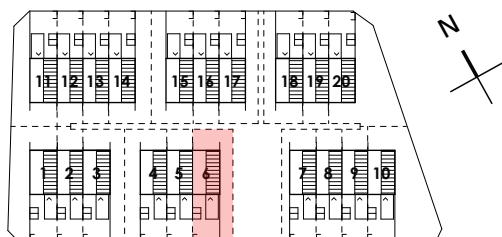
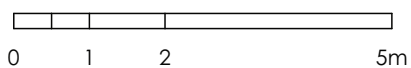
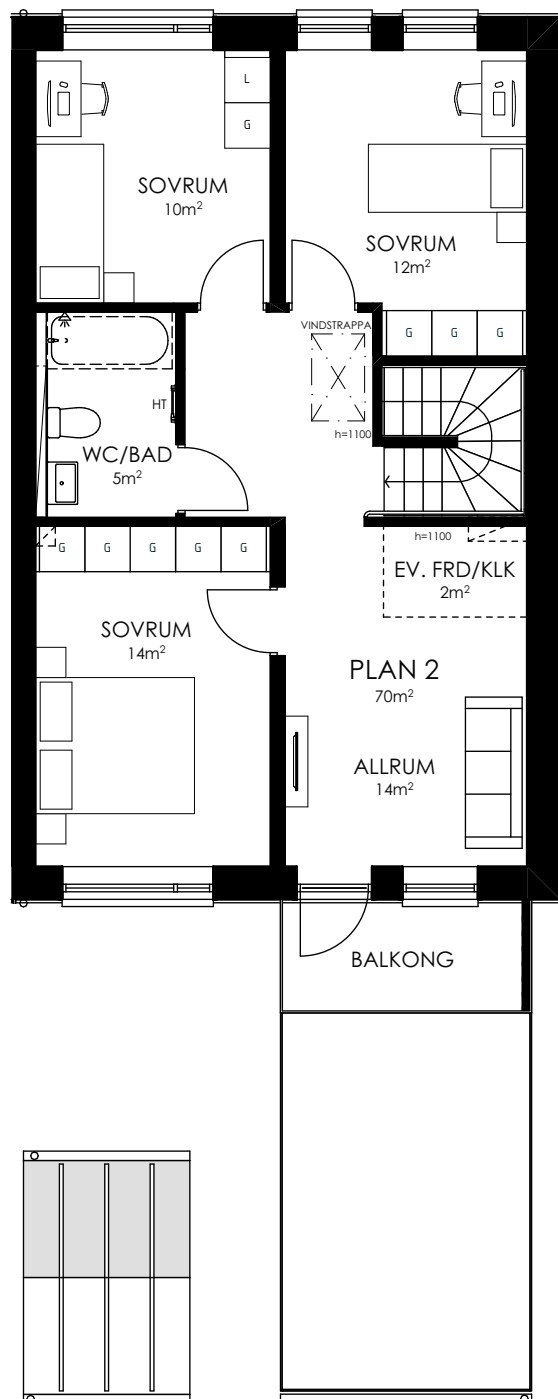
-  ENTRÉ
-  KAPPHYLLA
-  TVÄTTMASKIN
-  TORKTUMLARE
-  VÄRMEPUMP
-  DISKMASKIN
-  KYL
-  FRYS
-  MIKRO OCH INBYGGNADSUGN
-  SPISHÄLL
-  LINNESKÅP
-  GARDEROB
-  FÖRRÅD
-  KLÄDKAMMARE
-  SKÅP FÖR RÖRKOPPLINGAR
-  ELCENTRAL
-  HANDDUKTORK
-  TILLVALSVÄGG



# Talldungen



HUS: 6  
PLAN: 2  
5 ROK, CA 140 KVM  
TOMTAREA: 317 KVM  
SKALA 1:100




ORIENTERINGSFIGUR 2021-03-29

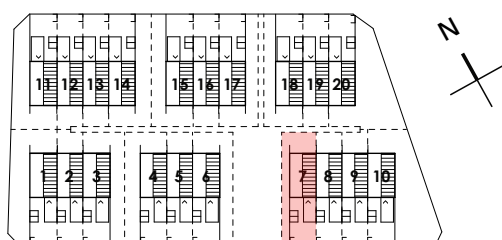
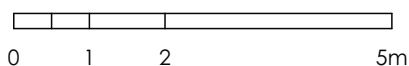
PLAN 2

# Taldungen

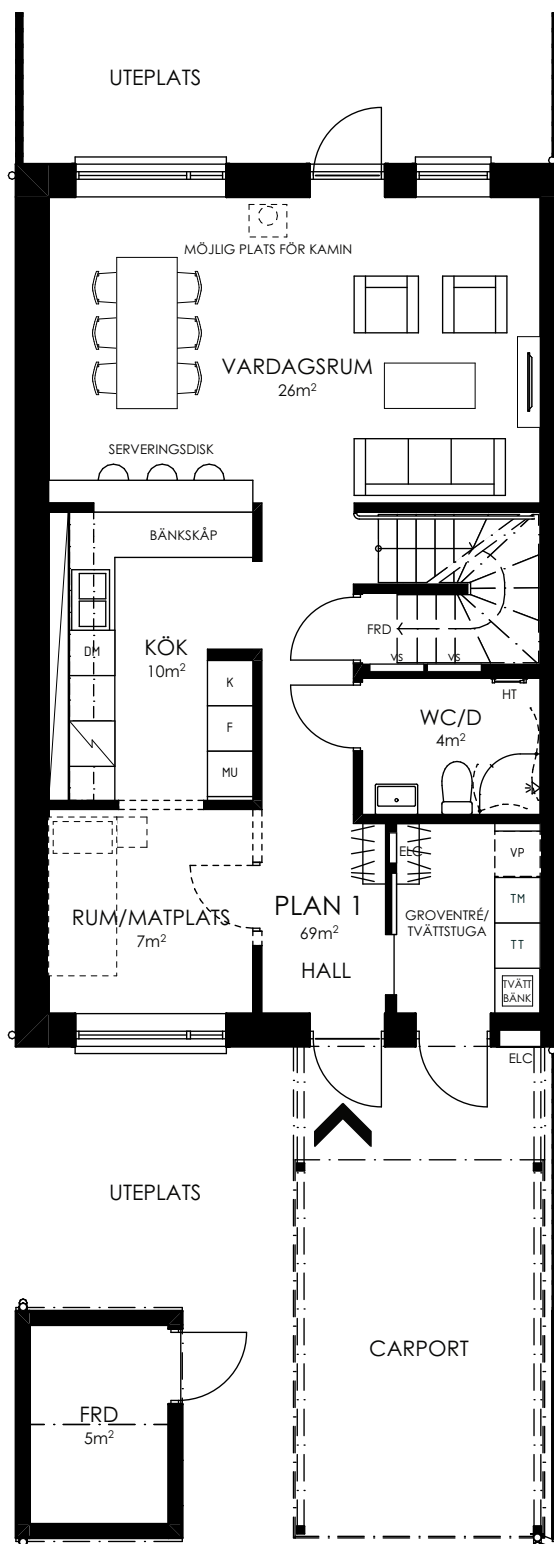


HUS: 7  
 PLAN: 1  
 5 ROK, CA 140 KVM  
 TOMTAREA: 271 KVM  
 SKALA 1:100

-  ENTRÉ
-  KAPPHYLLA
-  TVÄTTMASKIN
-  TORKTUMLARE
-  VÄRMEPUMP
-  DISKMASKIN
-  KYL
-  FRYS
-  MIKRO OCH INBYGGNADSUGN
-  SPISHÄLL
-  LINNESKÅP
-  GARDEROB
-  FRD FÖRRÅD
-  KKK KLÄDKAMMARE
-  VS SKÅP FÖR RÖRKOPPLINGAR
-  ELC ELCENTRAL
-  HT HANDDUKSTORK
-  ==> TILLVALSVÄGG



ORIENTERINGSFIGUR 2021-03-29

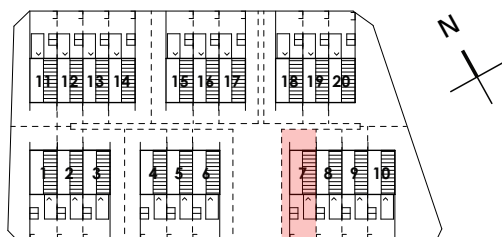
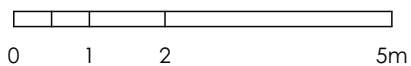
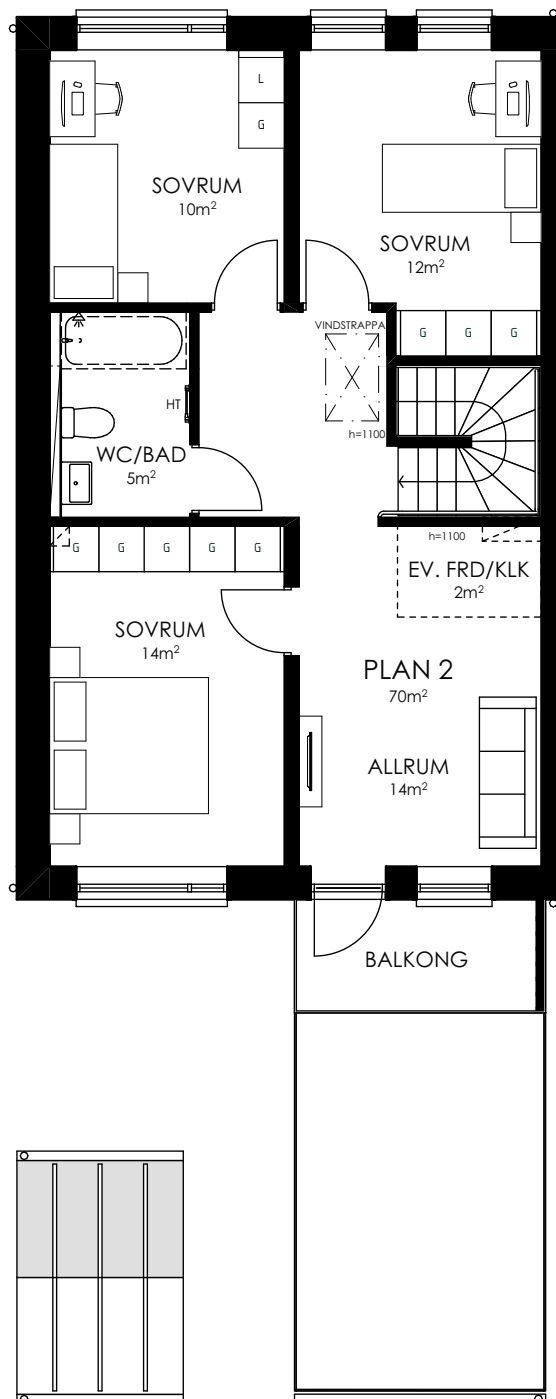


ENTRÉPLAN

# Talldungen



HUS: 7  
PLAN: 2  
5 ROK, CA 140 KVM  
TOMTAREA: 271 KVM  
SKALA 1:100



ORIENTERINGSFIGUR 2021-03-29

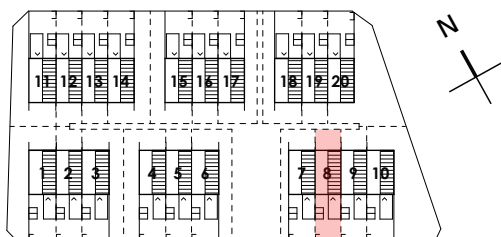
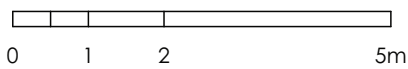
PLAN 2

# Taldungen

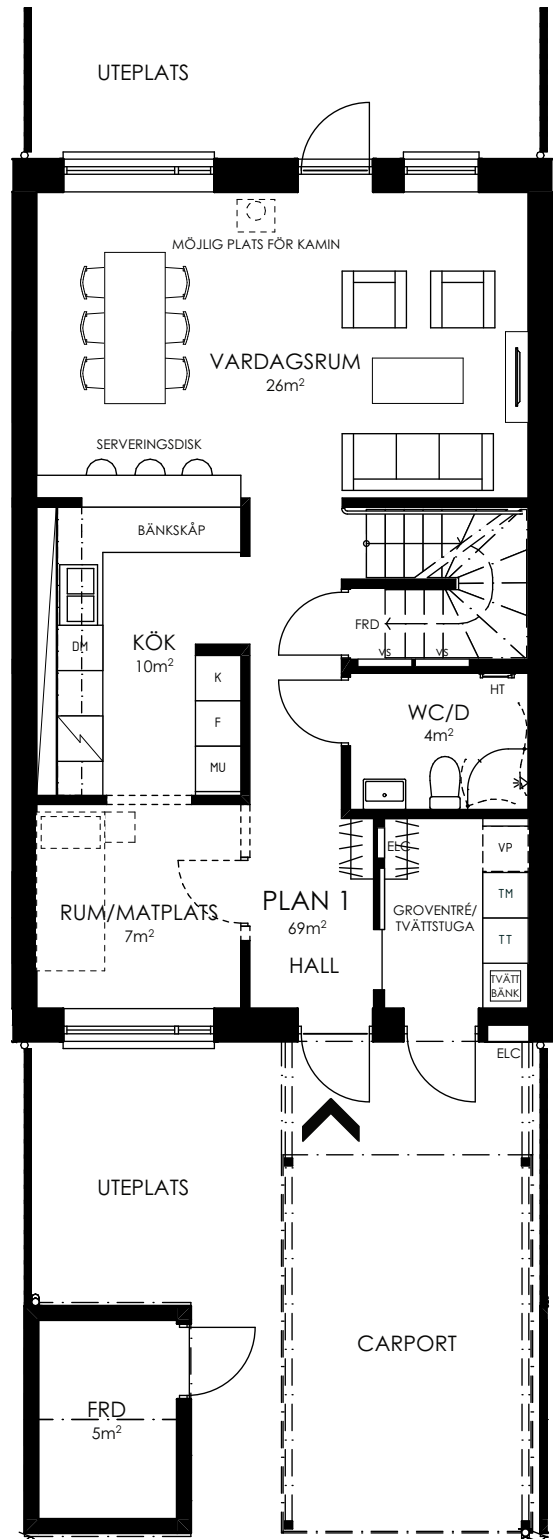


HUS: 8  
 PLAN: 1  
 5 ROK, CA 140 KVM  
 TOMTAREA: 203 KVM  
 SKALA 1:100

- ENTRÉ
- KAPPHYLLA
- TVÄTTMASKIN
- TORKTUMLARE
- VÄRMEPUMP
- DISKMASKIN
- KYL
- FRYS
- MIKRO OCH INBYGGNADSUGN
- SPISHÄLL
- LINNESKÅP
- GARDEROB
- FÖRRÅD
- KLÄDKAMMARE
- SKÅP FÖR RÖRKOPPLINGAR
- ELCENTRAL
- HANDDUKSTORK
- TILLVALSVÄGG



ORIENTERINGSFIGUR 2021-03-29

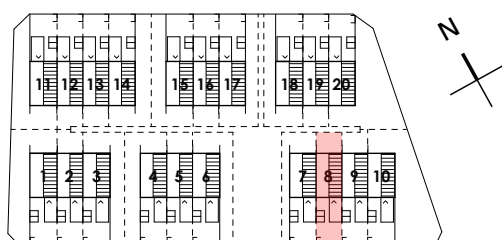
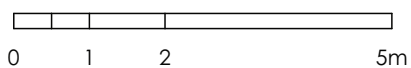
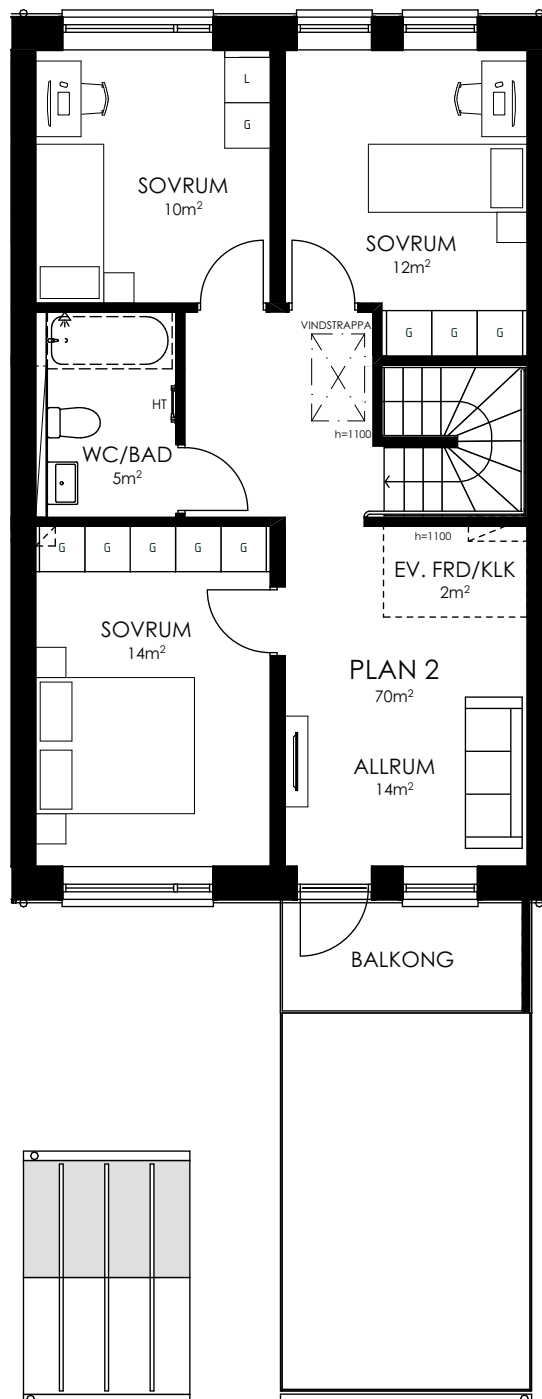


ENTRÉPLAN

# Talldungen



HUS: 8  
PLAN: 2  
5 ROK, CA 140 KVM  
TOMTAREA: 203 KVM  
SKALA 1:100



ORIENTERINGSFIGUR 2021-03-29

PLAN 2

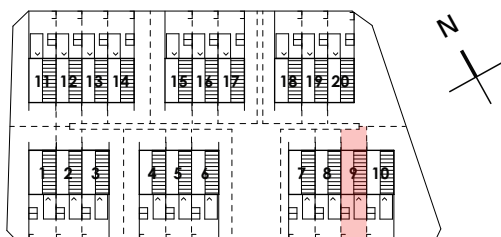
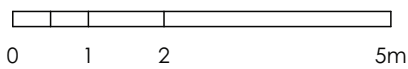


# Taldungen

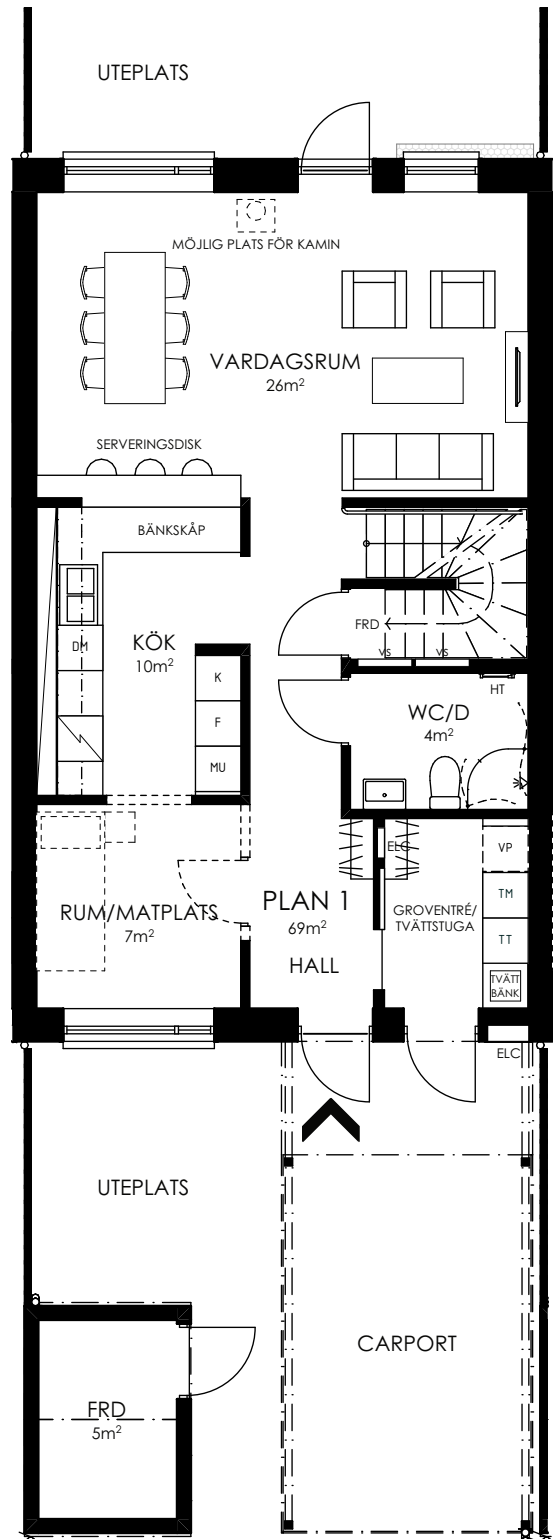


HUS: 9  
 PLAN: 1  
 5 ROK, CA 140 KVM  
 TOMTAREA: 204 KVM  
 SKALA 1:100

-  ENTRÉ
-  KAPPHYLLA
-  TVÄTTMASKIN
-  TORKTUMLARE
-  VÄRMEPUMP
-  DISKMASKIN
-  KYL
-  FRYS
-  MIKRO OCH INBYGGNADSUGN
-  SPISHÄLL
-  LINNESKÅP
-  GARDEROB
-  FÖRRÅD
-  KLÄDKAMMARE
-  SKÅP FÖR RÖRKOPPLINGAR
-  ELCENTRAL
-  HANDDUKTORK
-  TILLVALSVÄGG



ORIENTERINGSFIGUR 2021-03-29

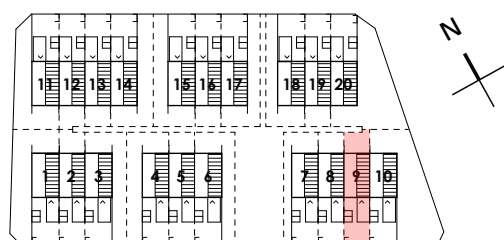
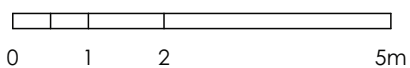
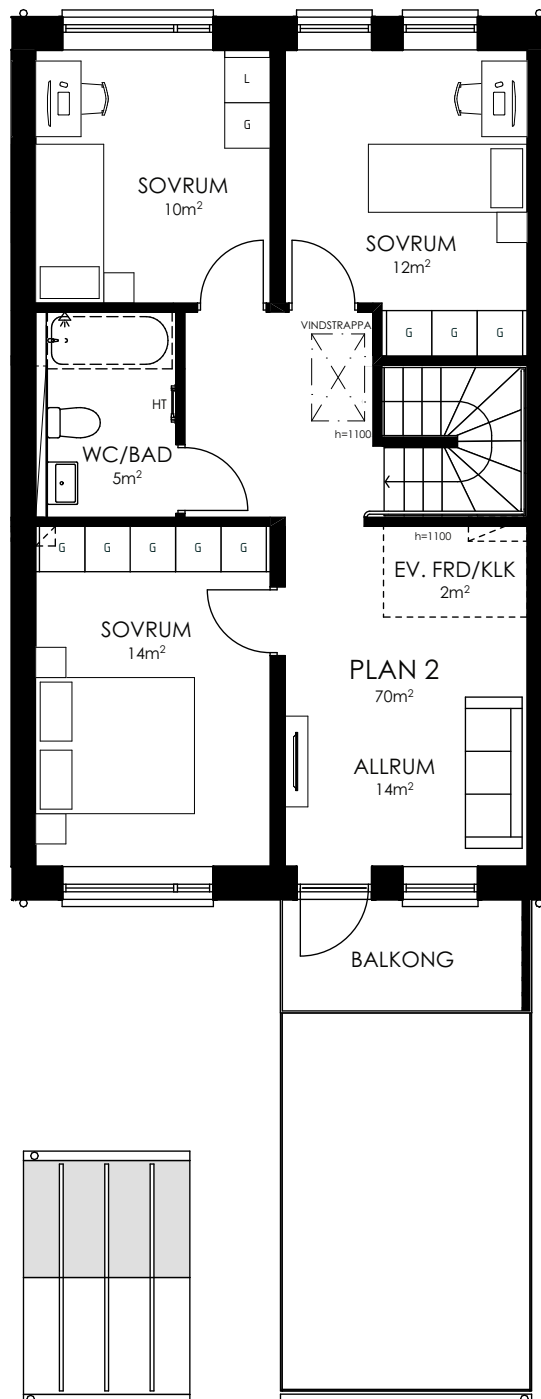


ENTRÉPLAN

# Talldungen



HUS: 9  
PLAN: 2  
5 ROK, CA 140 KVM  
TOMTAREA: 204 KVM  
SKALA 1:100



ORIENTERINGSFIGUR 2021-03-29

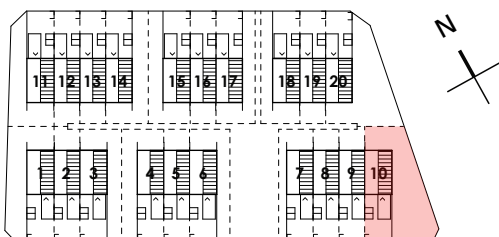
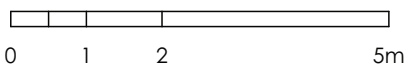
PLAN 2

# Taldungen

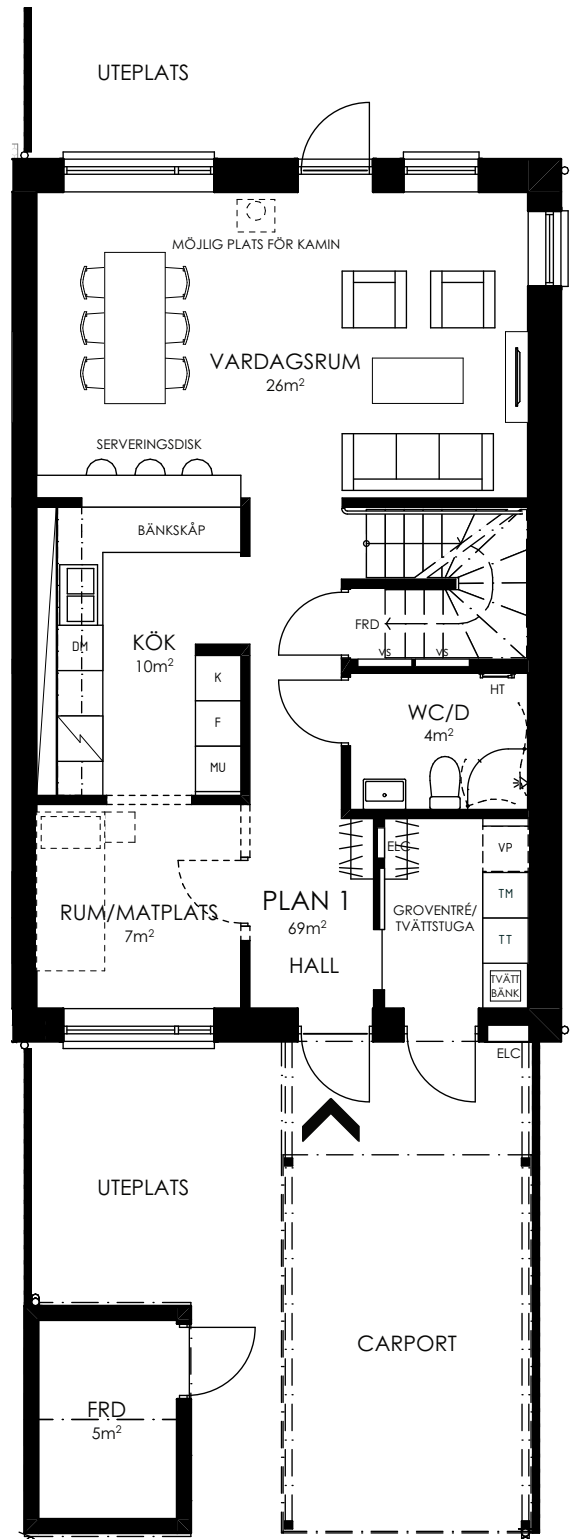


HUS: 10  
 PLAN: 1  
 5 ROK, CA 140 KVM  
 TOMTAREA: 465 KVM  
 SKALA 1:100

- ENTRÉ
- KAPPHYLLA
- TM TVÄTTMASKIN
- TT TORKTUMLARE
- VP VÄRMEPUMP
- DM DISKMASKIN
- K KYL
- F FRYSS
- MU MIKRO OCH INBYGGNADSUGN
- SPISHÄLL
- L LINNESKÅP
- G GARDEROB
- FRD FÖRRÅD
- KLK KLÄDKAMMARE
- VS SKÅP FÖR RÖRKOPPLINGAR
- ELC ELCENTRAL
- HT HANDDUKTORK
- ==> TILLVALSVÄGG



ORIENTERINGSFIGUR 2021-03-29

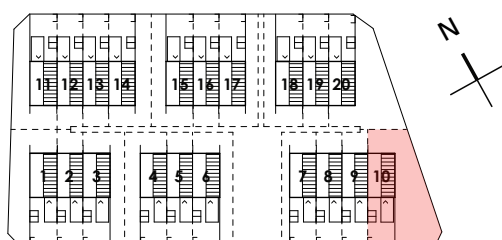
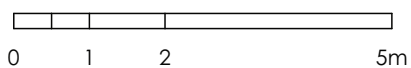
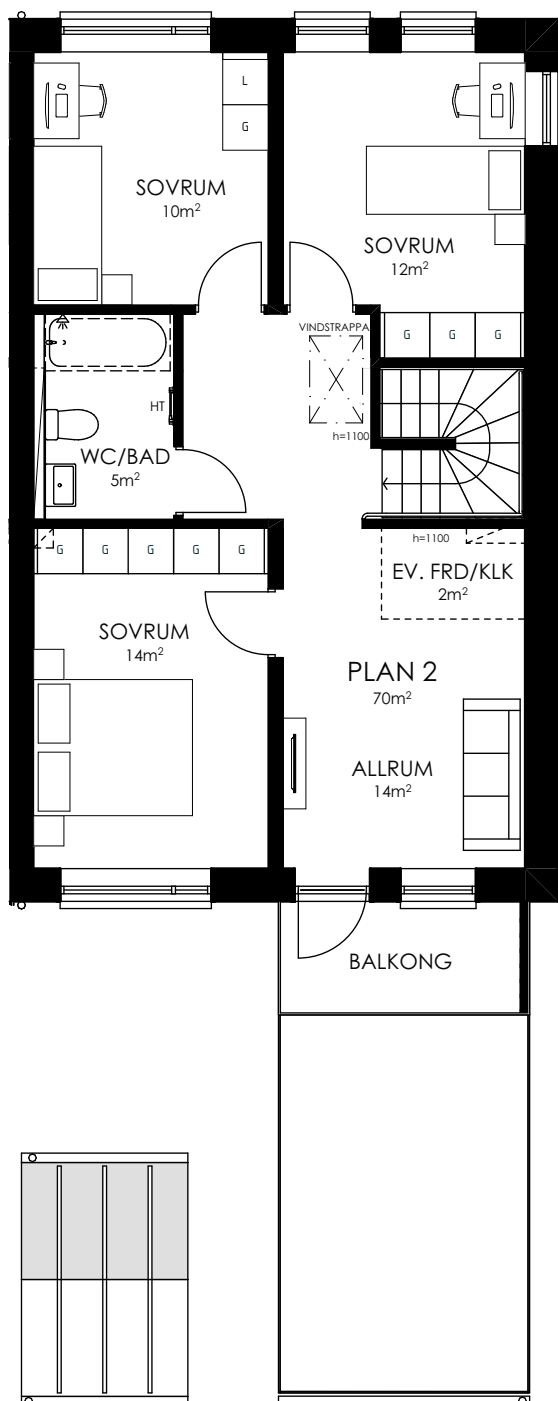


ENTRÉPLAN

# Talldungen



HUS: 10  
PLAN: 2  
5 ROK, CA 140 KVM  
TOMTAREA: 465 KVM  
SKALA 1:100



ORIENTERINGSFIGUR 2021-03-29

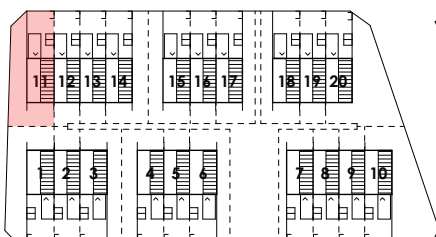
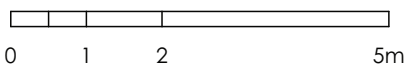
PLAN 2

# Talldungen

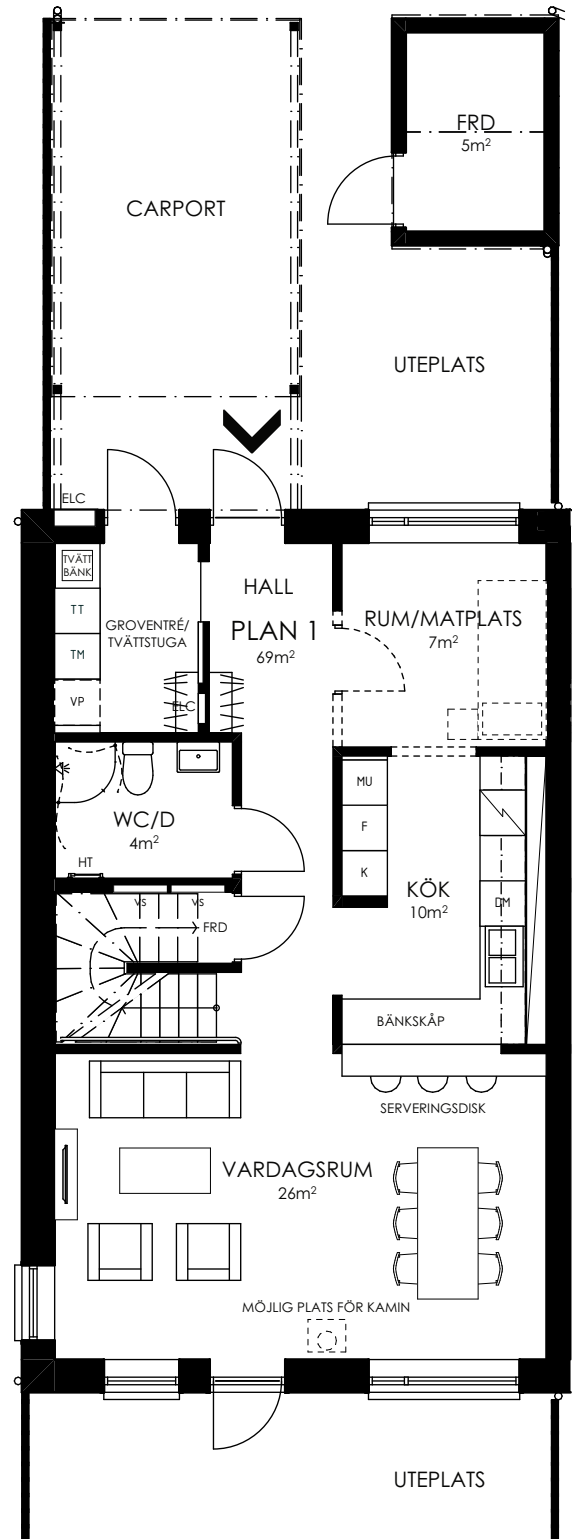


HUS: 11  
 PLAN: 1  
 5 ROK, CA 140 KVM  
 TOMTAREA: 350 KVM  
 SKALA 1:100

- ENTRÉ
- KAPPHYLLA
- TVÄTTMASKIN
- TORKTUMLARE
- VÄRMEPUMP
- DISKMASKIN
- KYL
- FRYS
- MIKRO OCH INBYGGNADSUGN
- SPISHÄLL
- LINNESKÅP
- GARDEROB
- FÖRRÅD
- KLÄDKAMMARE
- SKÅP FÖR RÖRKOPPLINGAR
- ELCENTRAL
- HANDDUKSTORK
- TILLVALSVÄGG



ORIENTERINGSFIGUR 2021-03-29

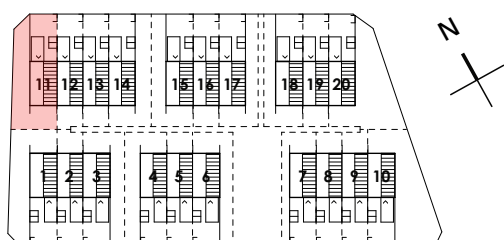
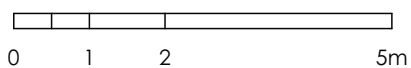
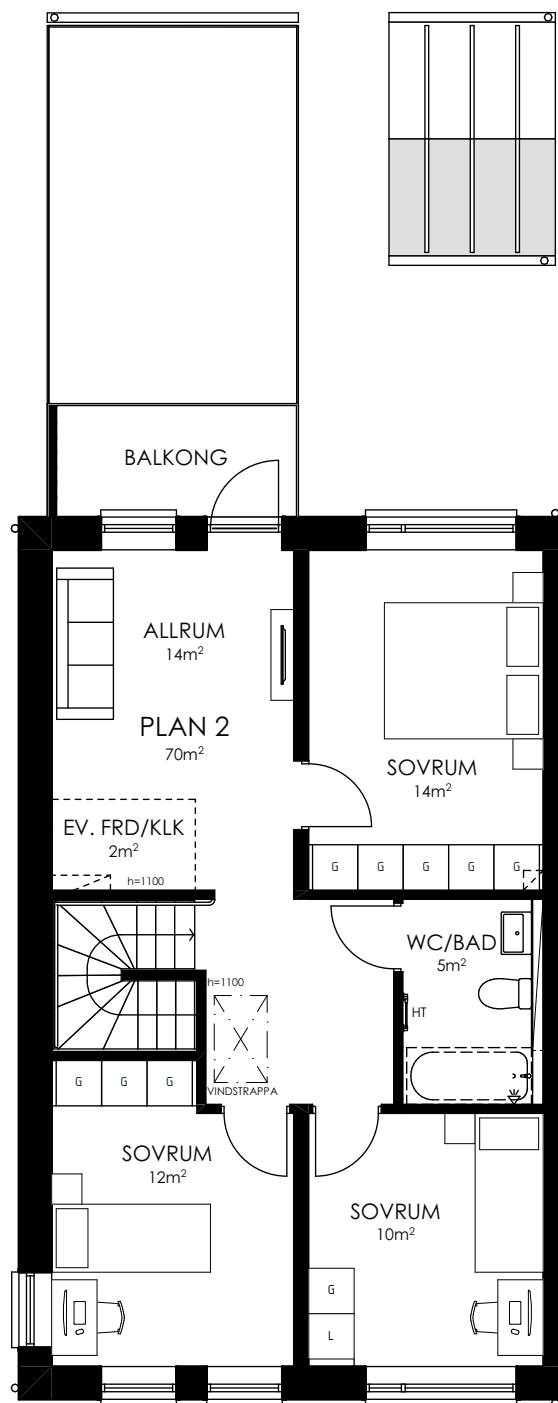


ENTRÉPLAN

# Talldungen



HUS: 11  
PLAN: 2  
5 ROK, CA 140 KVM  
TOMTAREA: 350 KVM  
SKALA 1:100

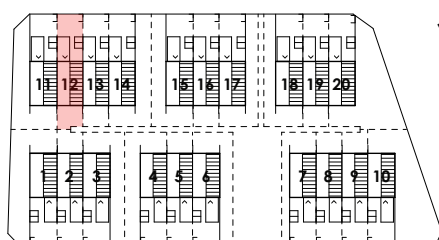
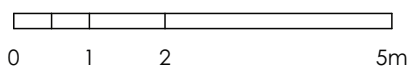


# Talldungen

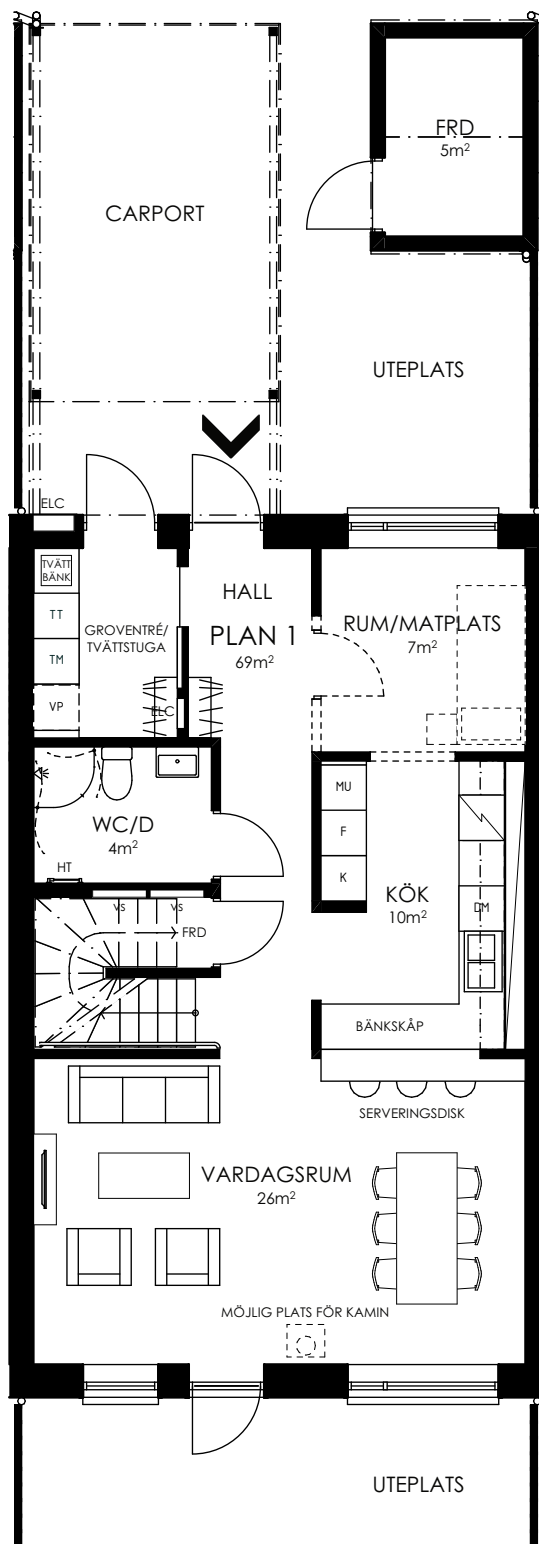


HUS: 12  
 PLAN: 1  
 5 ROK, CA 140 KVM  
 TOMTAREA: 206 KVM  
 SKALA 1:100

- ENTRÉ
- KAPPHYLLA
- TVÄTTMASKIN
- TORKTUMLARE
- VÄRMEPUMP
- DISKMASKIN
- KYL
- FRYS
- MIKRO OCH INBYGGNADSUGN
- SPISHÄLL
- LINNESKÅP
- GARDEROB
- FÖRRÅD
- KLÄDKAMMARE
- SKÅP FÖR RÖRKOPPLINGAR
- ELCENTRAL
- HANDDUKSTORK
- TILLVALSVÄGG



ORIENTERINGSFIGUR 2021-03-29

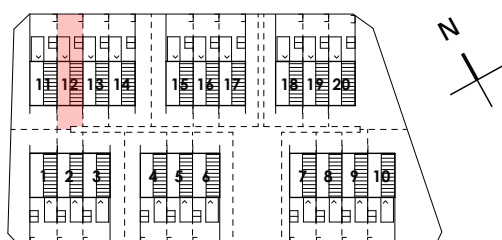
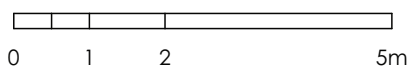
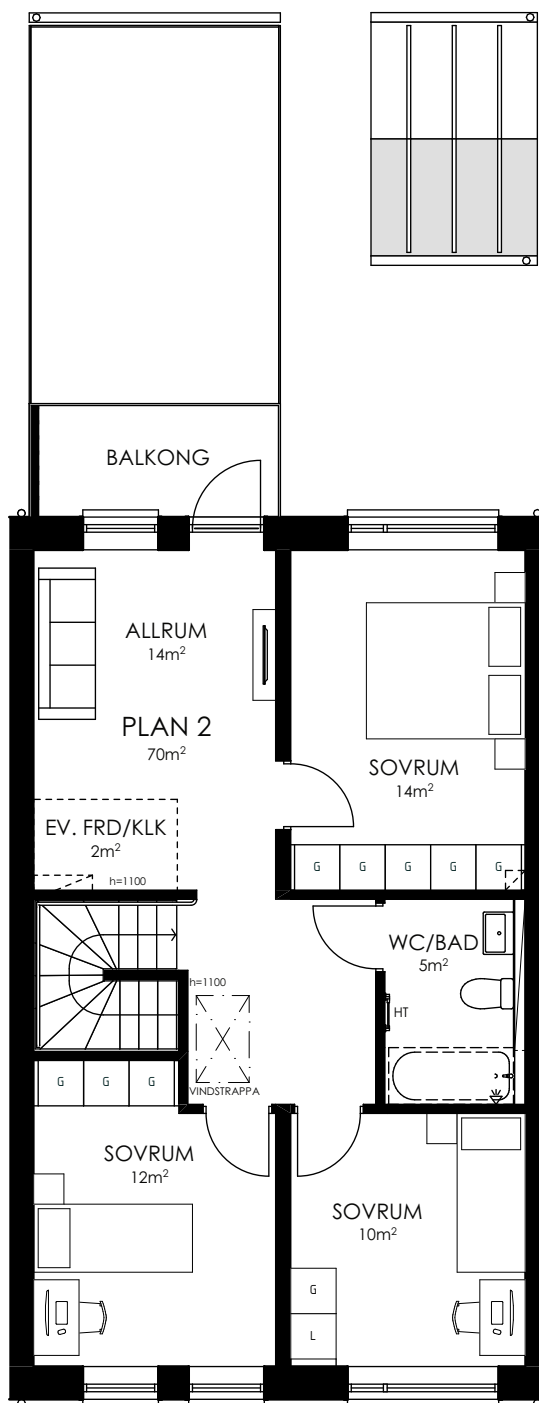


ENTRÉPLAN

# Talldungen



HUS: 12  
PLAN: 2  
5 ROK, CA 140 KVM  
TOMTAREA: 206 KVM  
SKALA 1:100



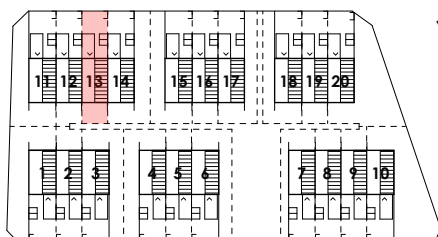
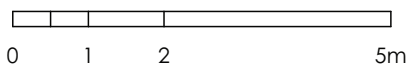


# Talldungen

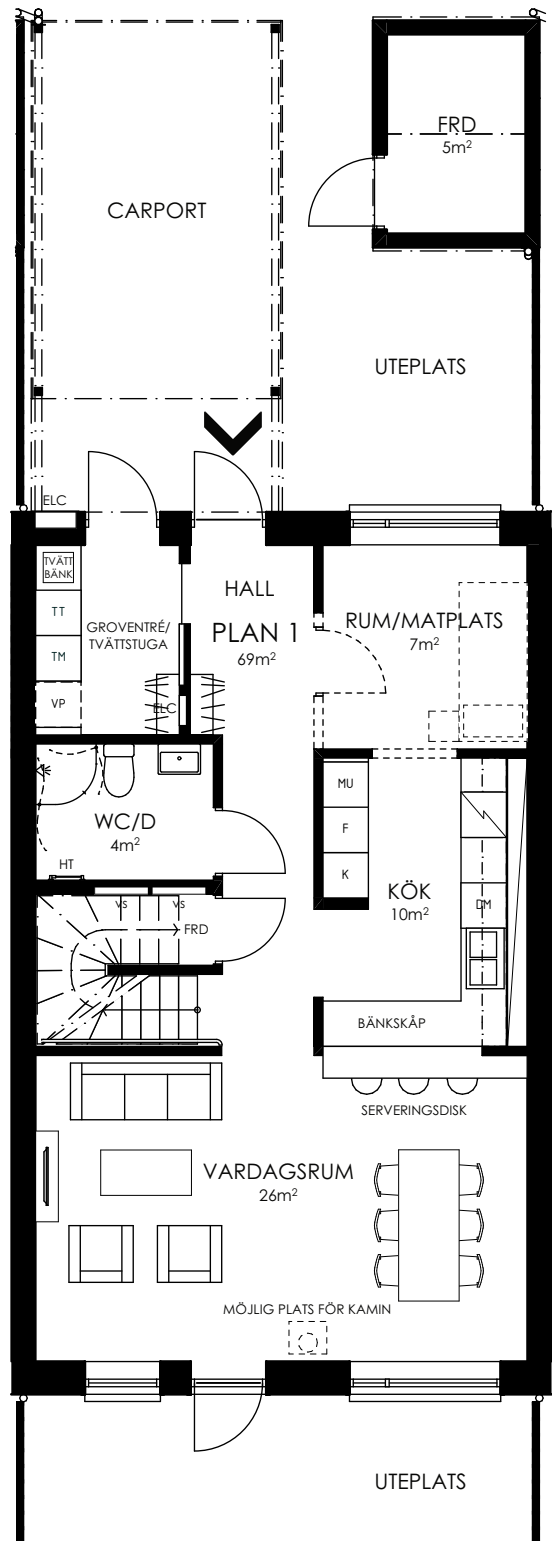


HUS: 13  
 PLAN: 1  
 5 ROK, CA 140 KVM  
 TOMTAREA: 203 KVM  
 SKALA 1:100

- ENTRÉ
- KAPPHYLLA
- TVÄTTMASKIN
- TORKTUMLARE
- VÄRMEPUMP
- DISKMASKIN
- KYL
- FRYS
- MIKRO OCH INBYGGNADSUGN
- SPISHÄLL
- LINNESKÅP
- GARDEROB
- FÖRRÅD
- KLÄDKAMMARE
- SKÅP FÖR RÖRKOPPLINGAR
- ELCENTRAL
- HANDDUKSTORK
- TILLVALSVÄGG



ORIENTERINGSFIGUR 2021-03-29

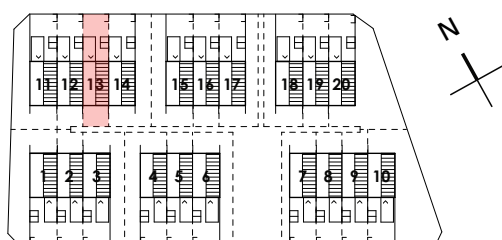
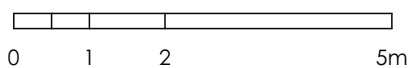
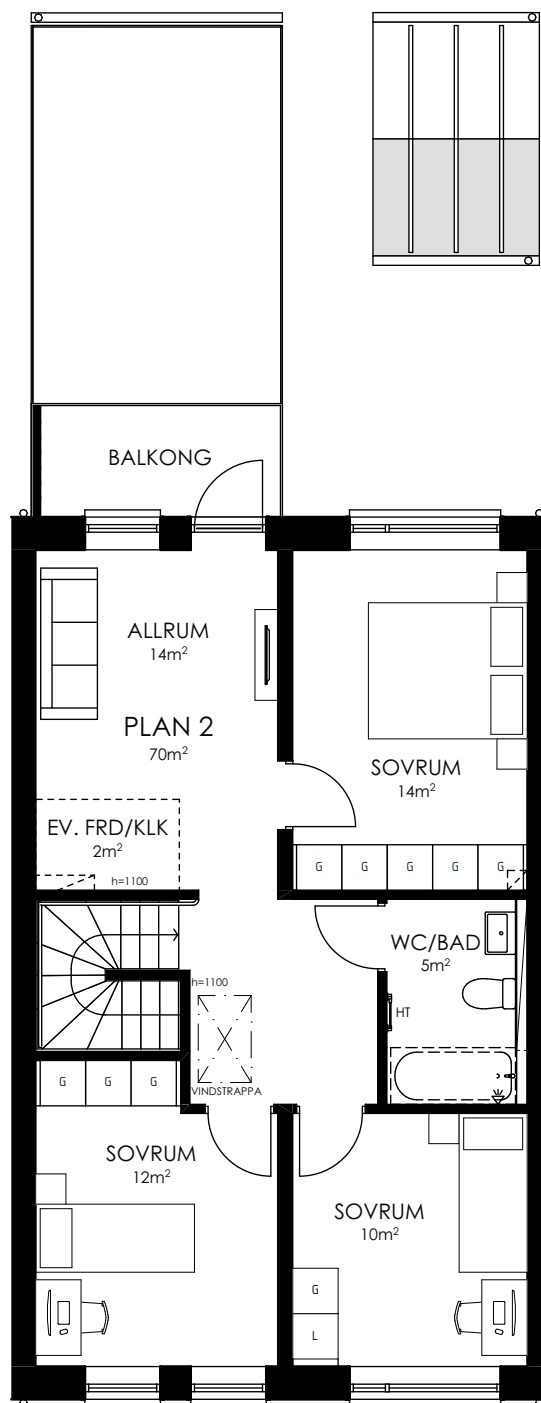


ENTRÉPLAN

# Talldungen



HUS: 13  
PLAN: 2  
5 ROK, CA 140 KVM  
TOMTAREA: 203 KVM  
SKALA 1:100

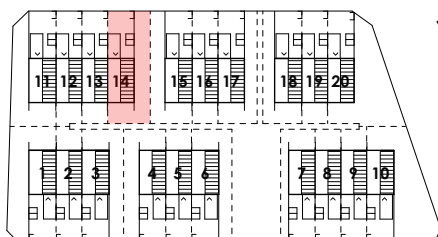
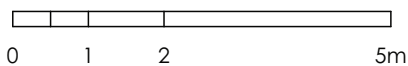


# Talldungen

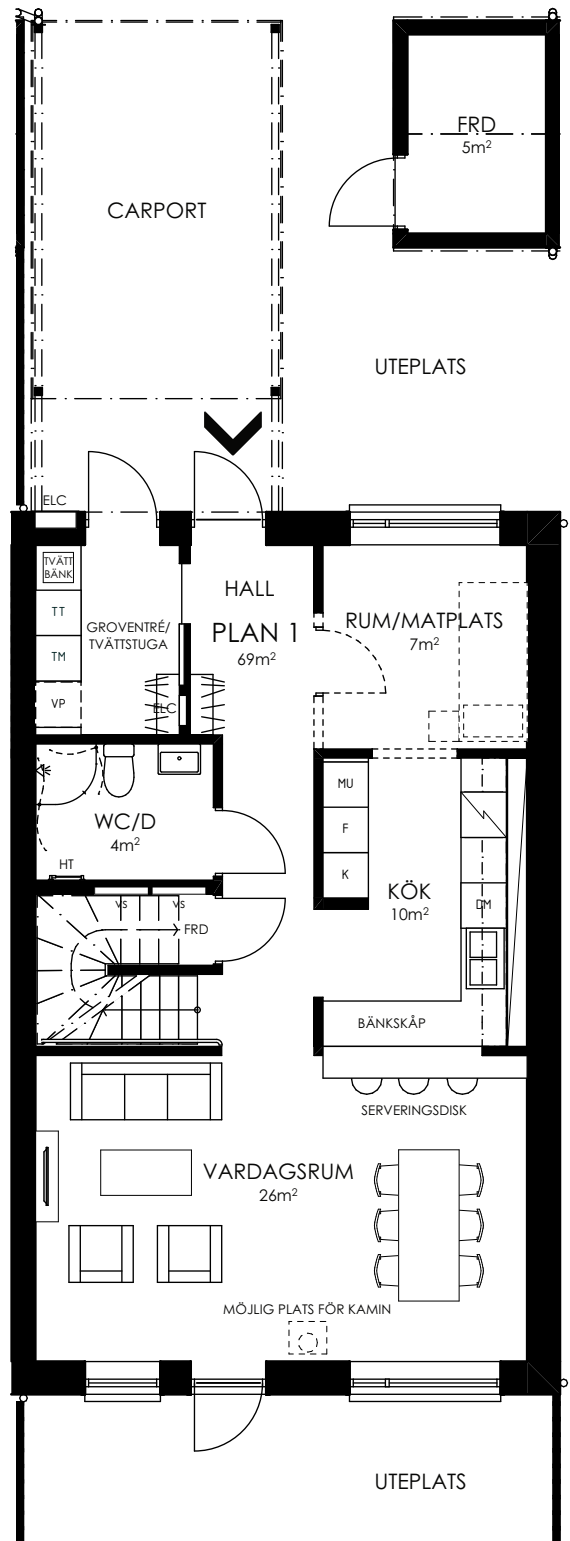


HUS: 14  
 PLAN: 1  
 5 ROK, CA 140 KVM  
 TOMTAREA: 335 KVM  
 SKALA 1:100

- ENTRÉ
- KAPPHYLLA
- TVÄTTMASKIN
- TORKTUMLARE
- VÄRMEPUMP
- DISKMASKIN
- KYL
- FRYS
- MIKRO OCH INBYGGNADSUGN
- SPISHÄLL
- LINNESKÅP
- GARDEROB
- FÖRRÅD
- KLÄDKAMMARE
- SKÅP FÖR RÖRKOPPLINGAR
- ELCENTRAL
- HANDDUKSTORK
- TILLVALSVÄGG



ORIENTERINGSFIGUR 2021-03-29

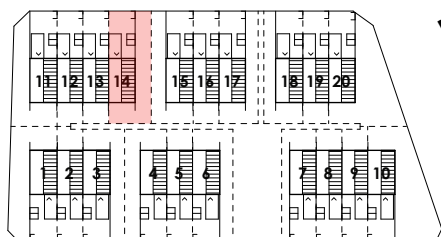
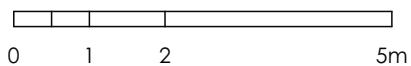
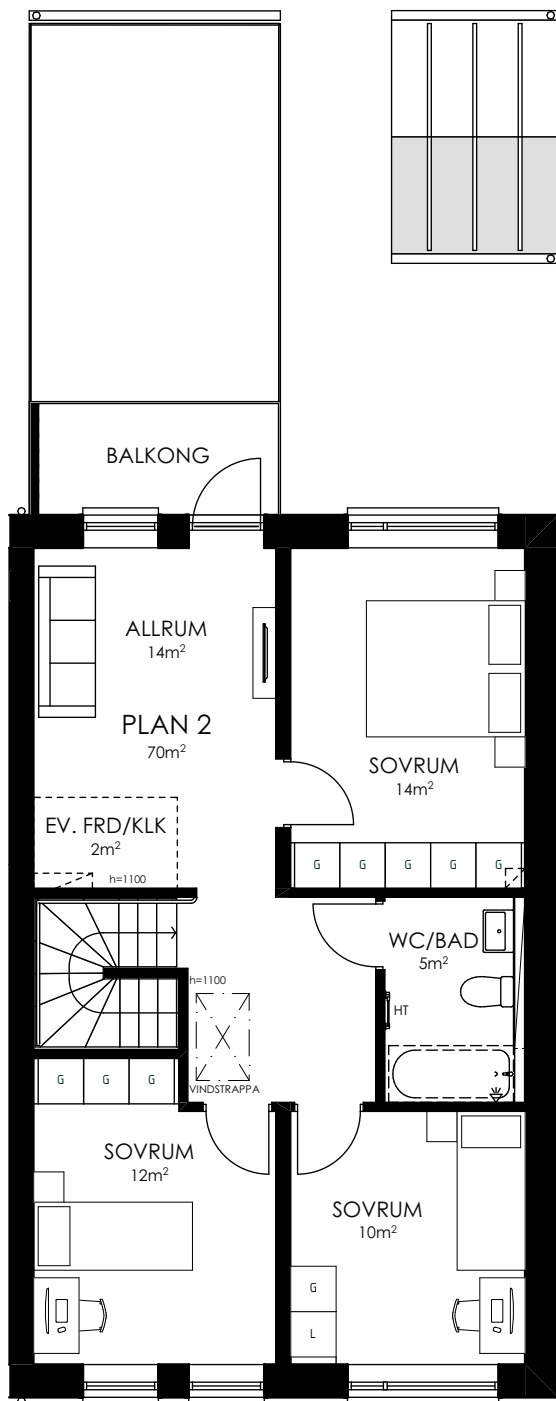


ENTRÉPLAN

# Talldungen



HUS: 14  
PLAN: 2  
5 ROK, CA 140 KVM  
TOMTAREA: 335 KVM  
SKALA 1:100



ORIENTERINGSFIGUR 2021-03-29

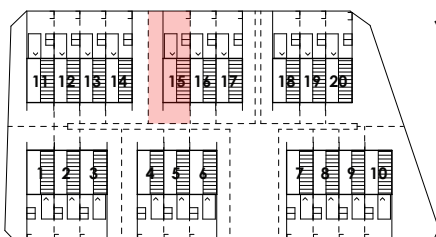
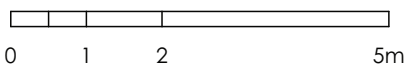
PLAN 2

# Taldungen

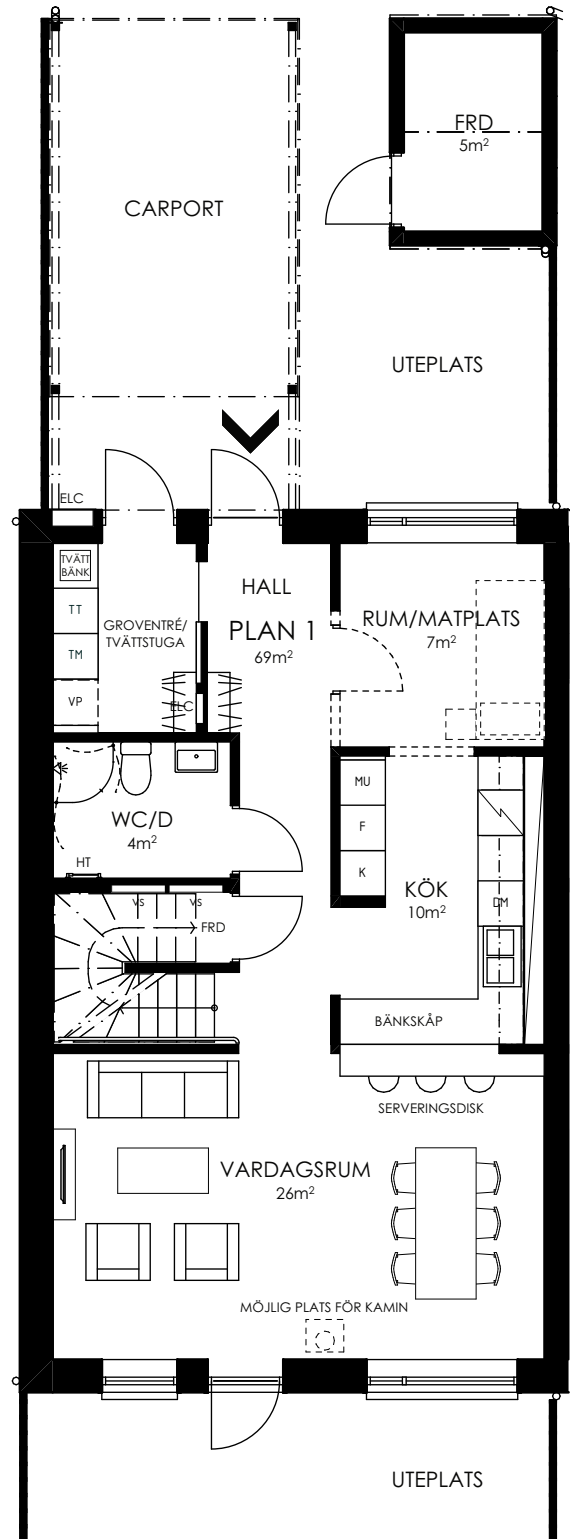


HUS: 15  
 PLAN: 1  
 5 ROK, CA 140 KVM  
 TOMTAREA: 335 KVM  
 SKALA 1:100

- ENTRÉ
- KAPPHYLLA
- TVÄTTMASKIN
- TORKTUMLARE
- VÄRMEPUMP
- DISKMASKIN
- KYL
- FRYS
- MIKRO OCH INBYGGNADSUGN
- SPISHÄLL
- LINNESKÅP
- GARDEROB
- FÖRRÅD
- KLÄDKAMMARE
- SKÅP FÖR RÖRKOPPLINGAR
- ELCENTRAL
- HANDDUKSTORK
- TILLVALSVÄGG



ORIENTERINGSFIGUR 2021-03-29

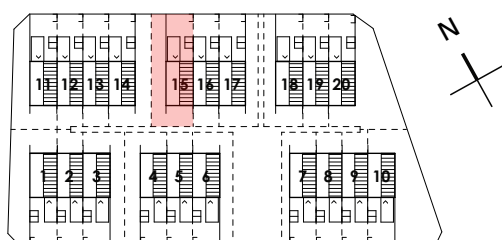
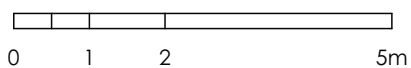
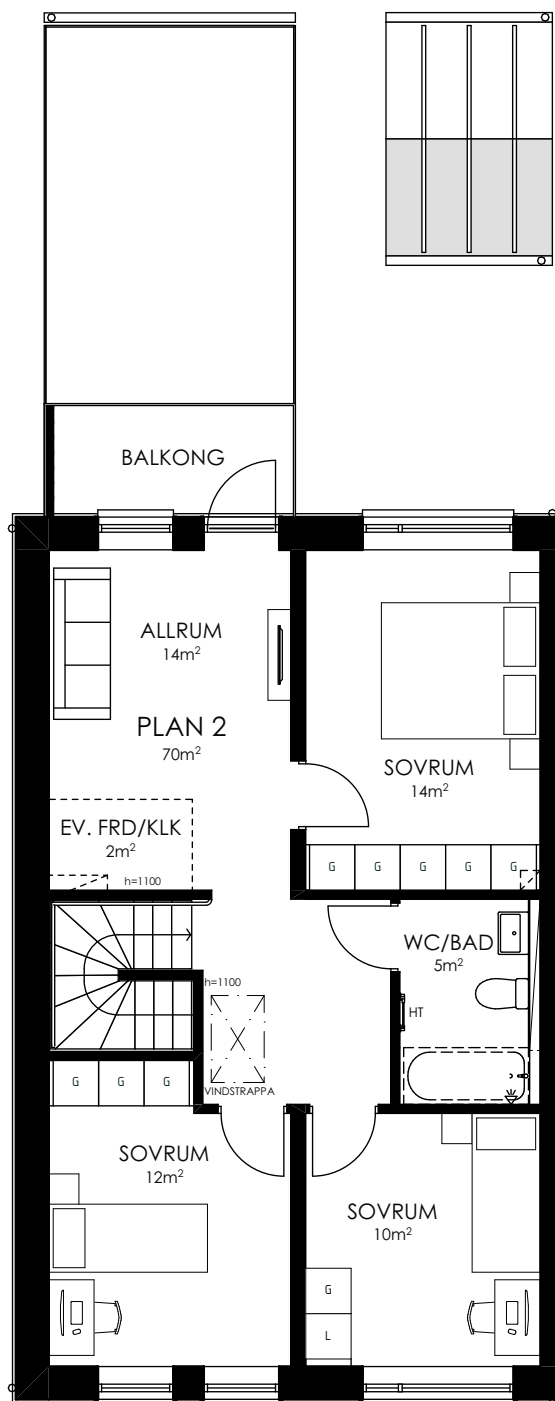


ENTRÉPLAN

# Talldungen



HUS: 15  
PLAN: 2  
5 ROK, CA 140 KVM  
TOMTAREA: 335 KVM  
SKALA 1:100

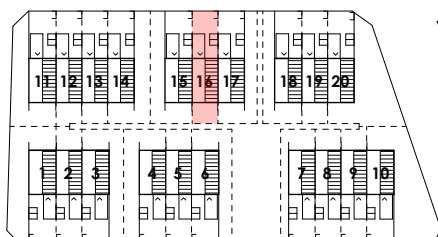
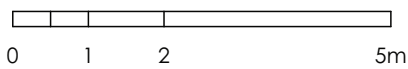


# Taldungen

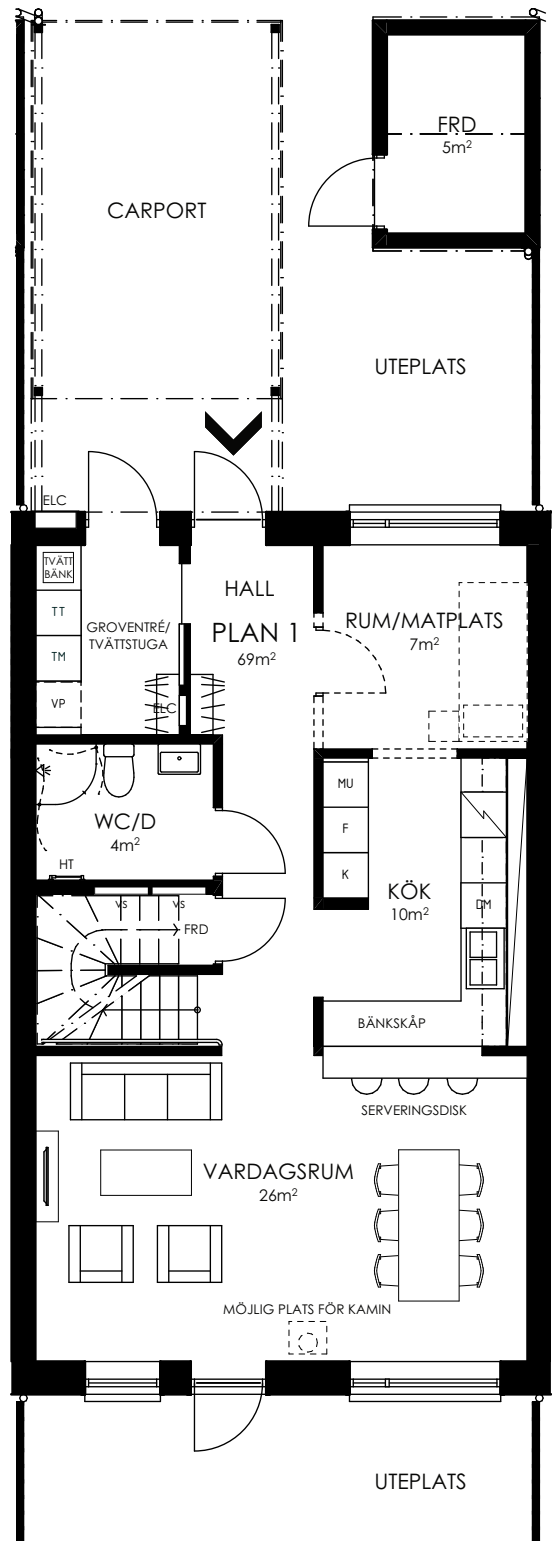


HUS: 16  
 PLAN: 1  
 5 ROK, CA 140 KVM  
 TOMTAREA: 203 KVM  
 SKALA 1:100

- ENTRÉ
- KAPPHYLLA
- TVÄTTMASKIN
- TORKTUMLARE
- VÄRMEPUMP
- DISKMASKIN
- KYL
- FRYS
- MIKRO OCH INBYGGNADSUGN
- SPISHÄLL
- LINNESKÅP
- GARDEROB
- FÖRRÅD
- KLÄDKAMMARE
- SKÅP FÖR RÖRKOPPLINGAR
- ELCENTRAL
- HANDDUKSTORK
- TILLVALSVÄGG



ORIENTERINGSFIGUR 2021-03-29

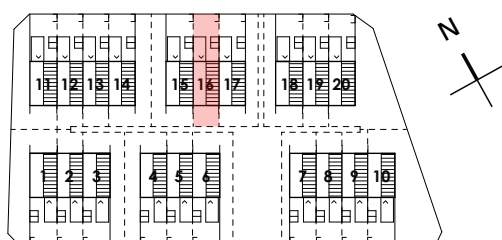
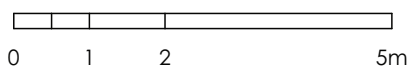
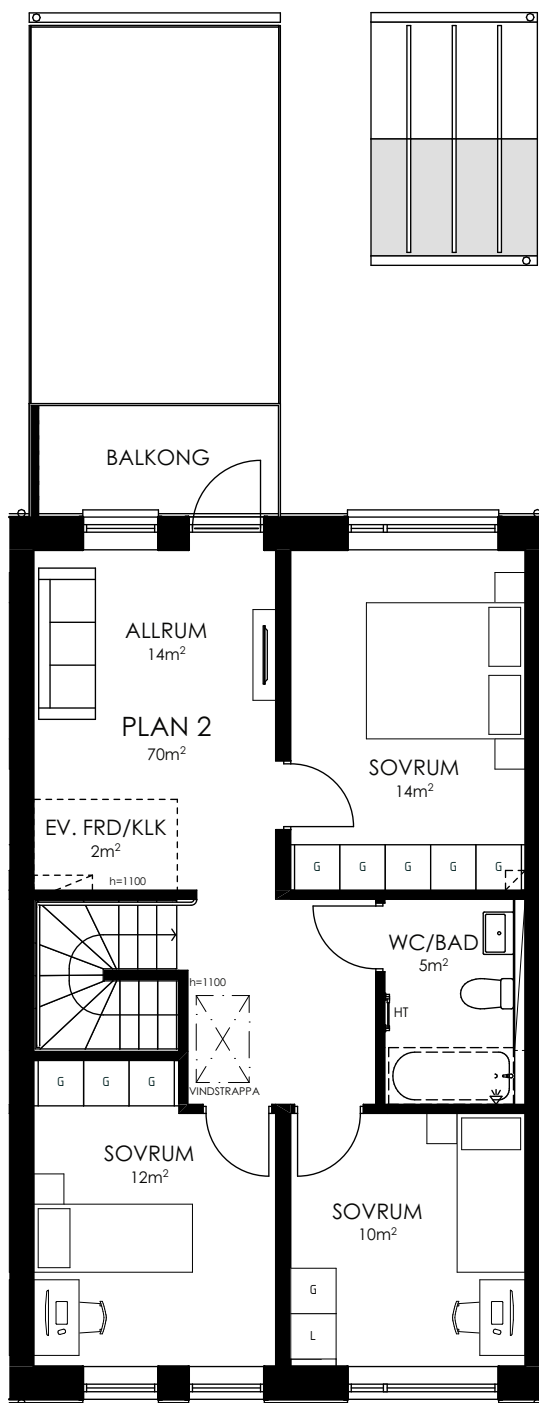


ENTRÉPLAN

# Talldungen



HUS: 16  
PLAN: 2  
5 ROK, CA 140 KVM  
TOMTAREA: 203 KVM  
SKALA 1:100



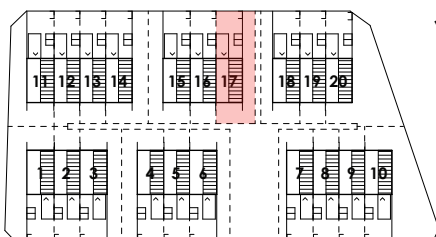
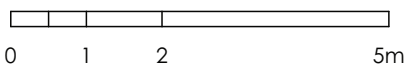


# Talldungen

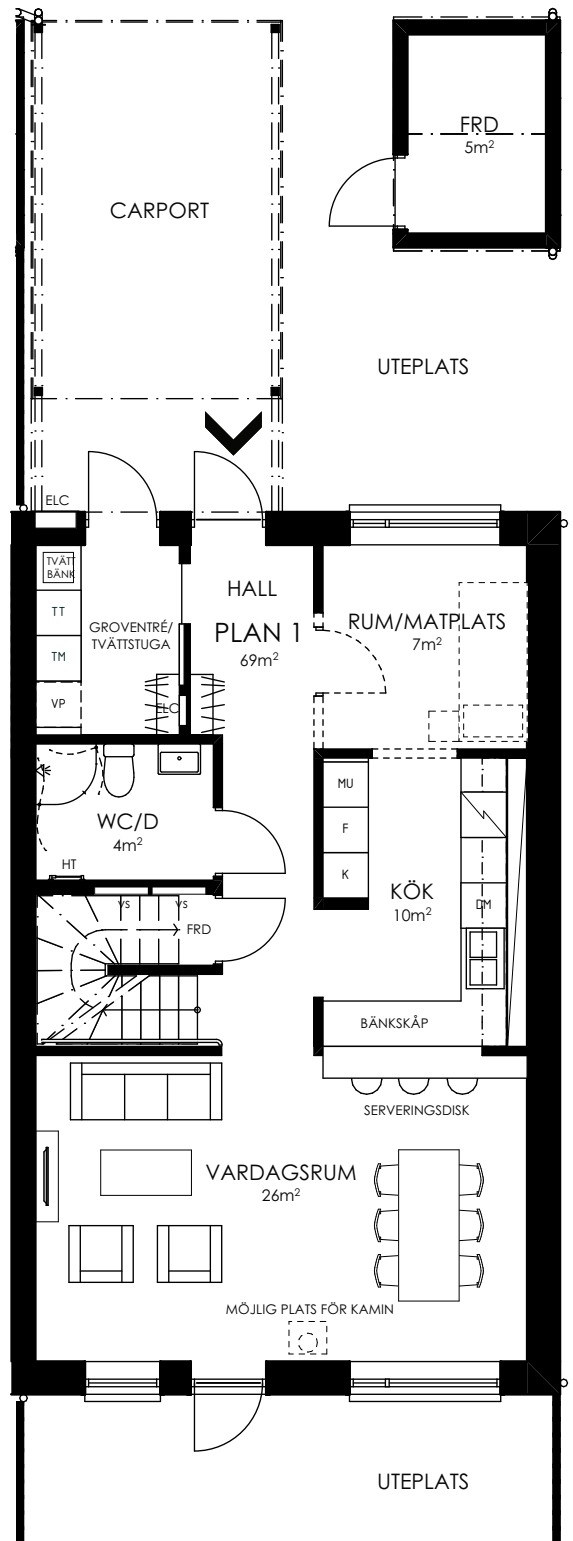


HUS: 17  
 PLAN: 1  
 5 ROK, CA 140 KVM  
 TOMTAREA: 308 KVM  
 SKALA 1:100

- ENTRÉ
- KAPPHYLLA
- TVÄTTMASKIN
- TORKTUMLARE
- VÄRMEPUMP
- DISKMASKIN
- KYL
- FRYSS
- MIKRO OCH INBYGGNADSUGN
- SPISHÄLL
- LINNESKÅP
- GARDEROB
- FÖRRÅD
- KLÄDKAMMARE
- SKÅP FÖR RÖRKOPPLINGAR
- ELCENTRAL
- HANDDUKTORK
- TILLVALSVÄGG



ORIENTERINGSFIGUR 2021-03-29

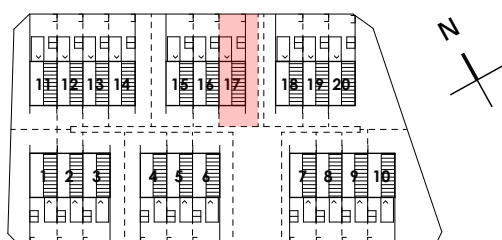
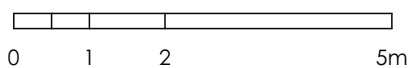
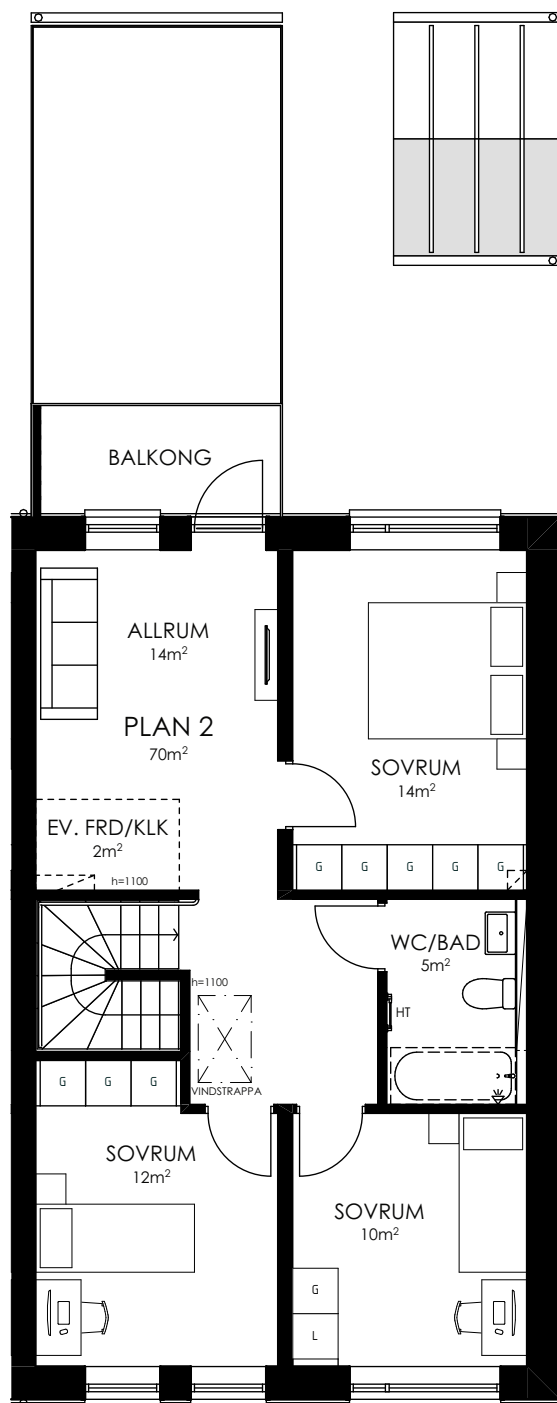


ENTRÉPLAN

# Talldungen



HUS: 17  
PLAN: 2  
5 ROK, CA 140 KVM  
TOMTAREA: 308 KVM  
SKALA 1:100



ORIENTERINGSFIGUR 2021-03-29

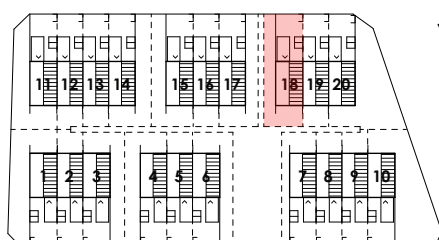
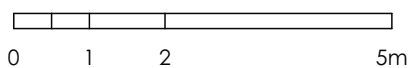
PLAN 2

# Taldungen

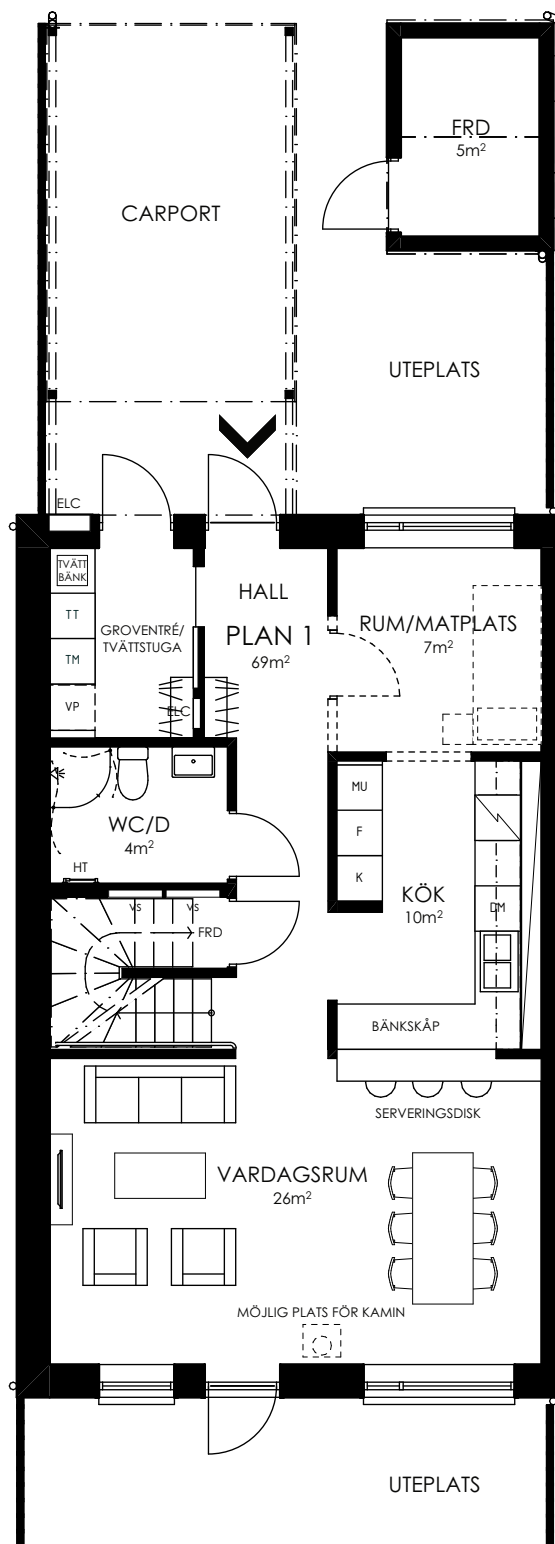


HUS: 18  
 PLAN: 1  
 5 ROK, CA 140 KVM  
 TOMTAREA: 307 KVM  
 SKALA 1:100

- ENTRÉ
- KAPPHYLLA
- TVÄTTMASKIN
- TORKTUMLARE
- VÄRMEPUMP
- DISKMASKIN
- KYL
- FRYS
- MIKRO OCH INBYGGNADSUGN
- SPISHÄLL
- LINNESKÅP
- GARDEROB
- FÖRRÅD
- KLÄDKAMMARE
- SKÅP FÖR RÖRKOPPLINGAR
- ELCENTRAL
- HANDDUKSTORK
- TILLVALSVÄGG



ORIENTERINGSFIGUR 2021-03-29

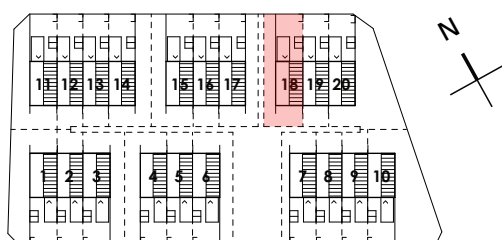
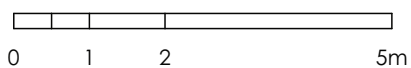
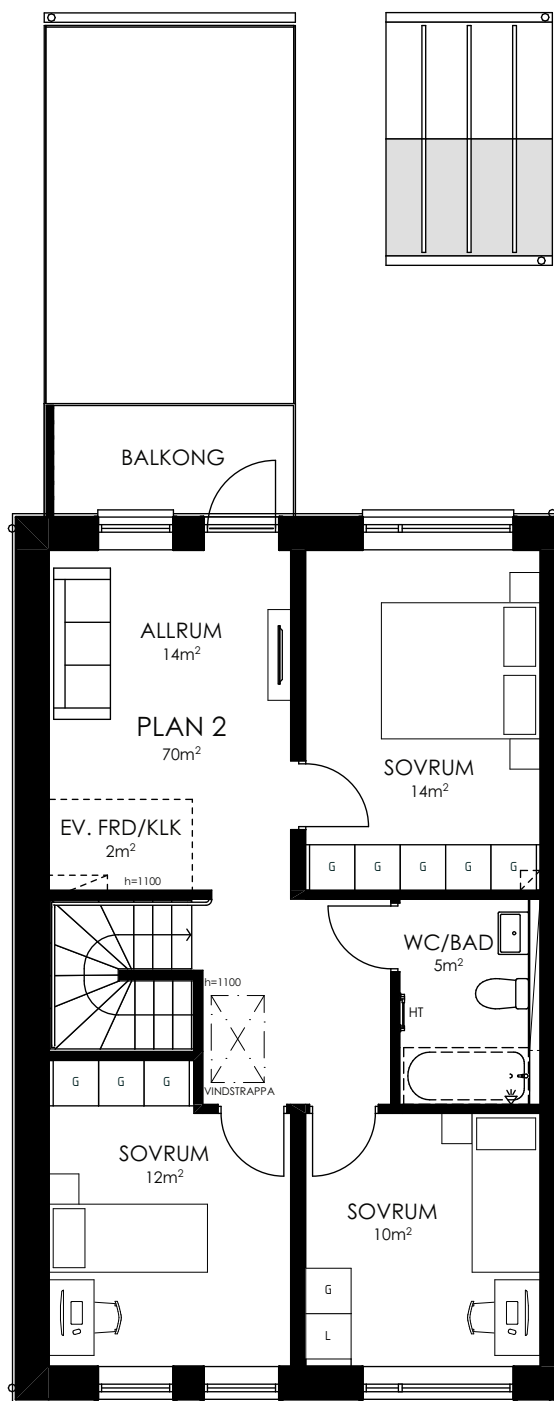


ENTRÉPLAN

# Talldungen



HUS: 18  
PLAN: 2  
5 ROK, CA 140 KVM  
TOMTAREA: 307 KVM  
SKALA 1:100



ORIENTERINGSFIGUR 2021-03-29

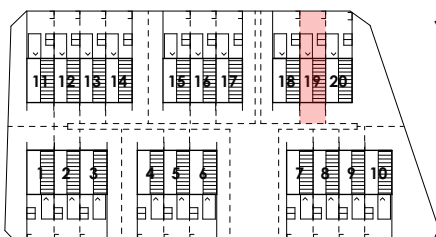
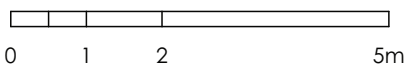
PLAN 2

# Taldungen

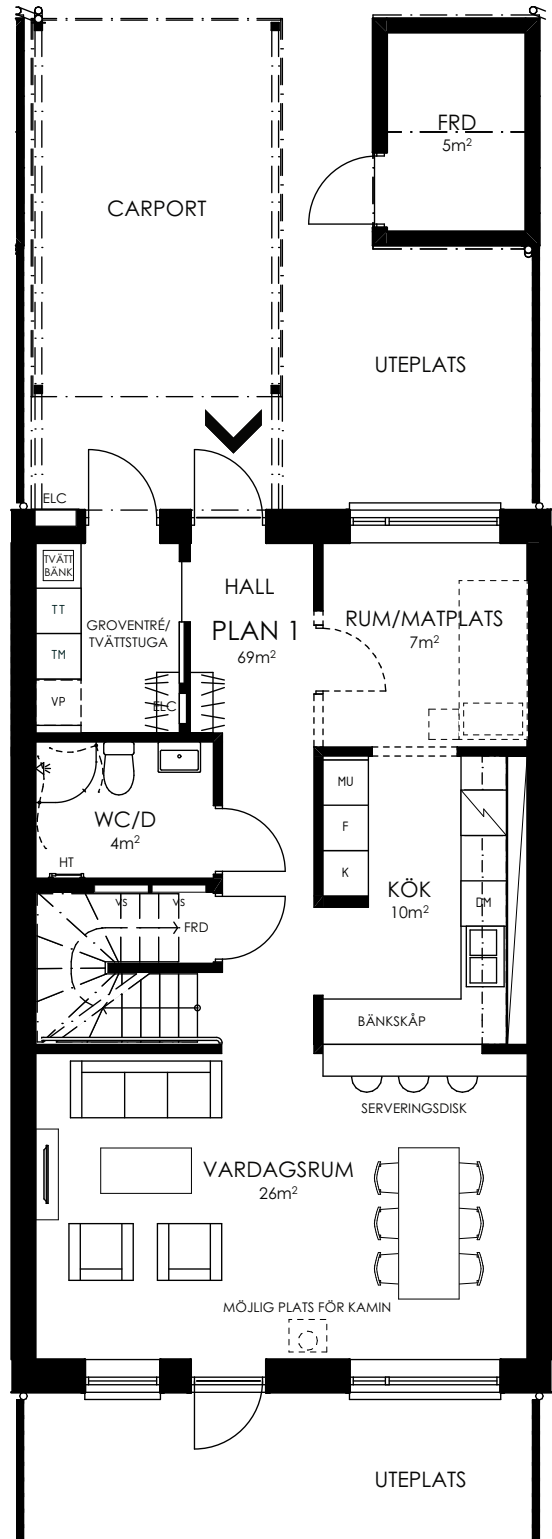


HUS: 19  
 PLAN: 1  
 5 ROK, CA 140 KVM  
 TOMTAREA: 203 KVM  
 SKALA 1:100

- ENTRÉ
- KAPPHYLLA
- TVÄTTMASKIN
- TORKTUMLARE
- VÄRMEPUMP
- DISKMASKIN
- KYL
- FRYS
- MIKRO OCH INBYGGNADSUGN
- SPISHÄLL
- LINNESKÅP
- GARDEROB
- FÖRRÅD
- KLÄDKAMMARE
- SKÅP FÖR RÖRKOPPLINGAR
- ELCENTRAL
- HANDDUKSTORK
- TILLVALSVÄGG



ORIENTERINGSFIGUR 2021-03-29

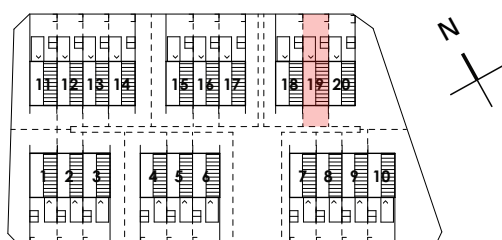
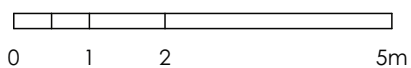
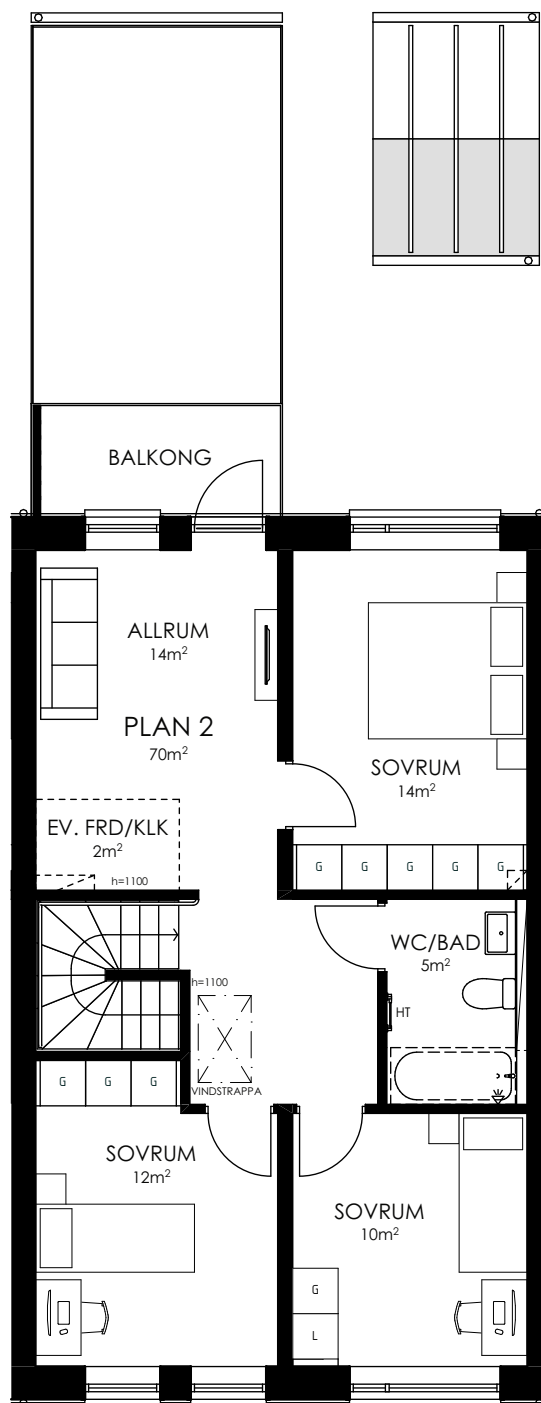


ENTRÉPLAN

# Talldungen



HUS: 19  
PLAN: 2  
5 ROK, CA 140 KVM  
TOMTAREA: 203 KVM  
SKALA 1:100

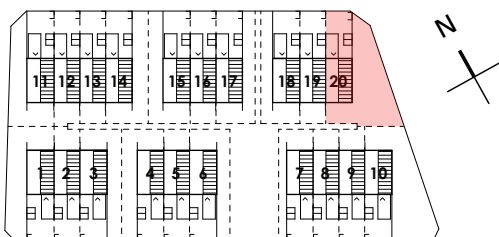
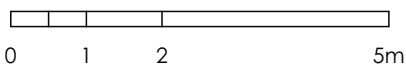


# Taldungen

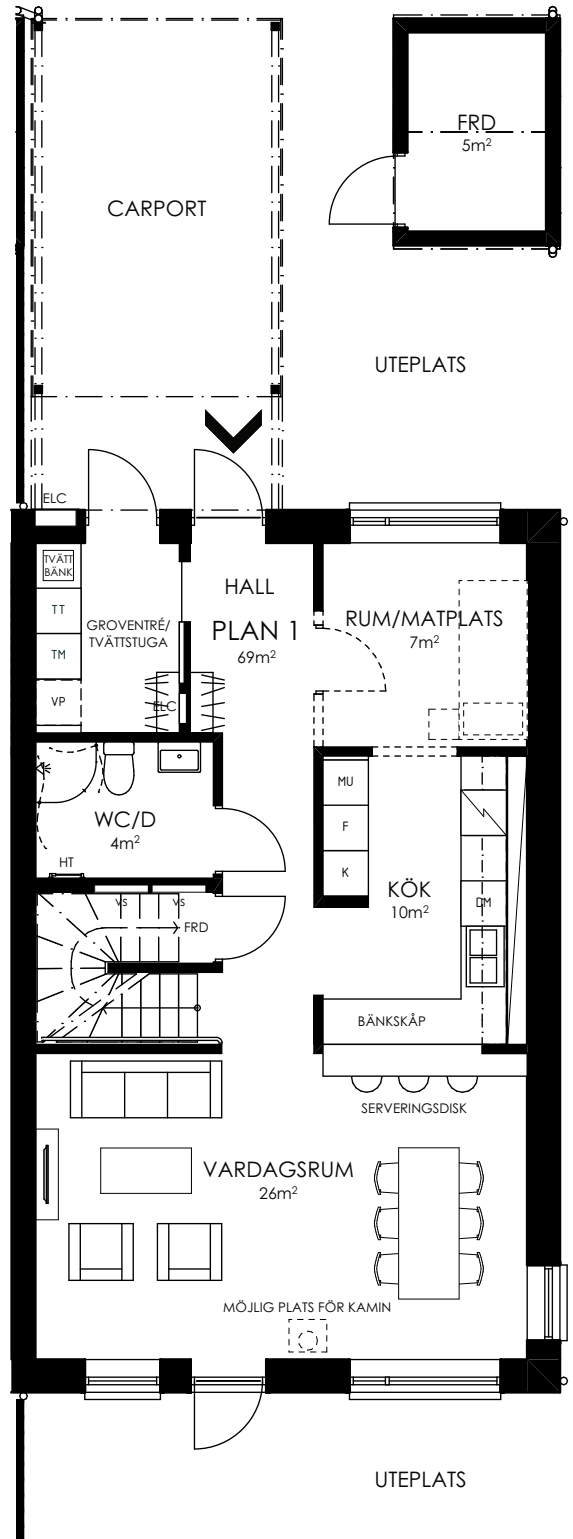


HUS: 20  
 PLAN: 1  
 5 ROK, CA 140 KVM  
 TOMTAREA: 457 KVM  
 SKALA 1:100

- ENTRÉ
- KAPPHYLLA
- TVÄTTMASKIN
- TORKTUMLARE
- VÄRMEPUMP
- DISKMASKIN
- KYL
- FRYS
- MIKRO OCH INBYGGNADSUGN
- SPISHÄLL
- LINNESKÅP
- GARDEROB
- FÖRRÅD
- KLÄDKAMMARE
- SKÅP FÖR RÖRKOPPLINGAR
- ELCENTRAL
- HANDDUKSTORK
- TILLVALSVÄGG



ORIENTERINGSFIGUR 2021-03-29



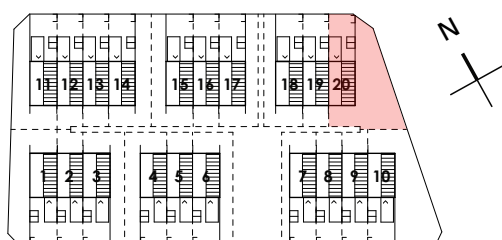
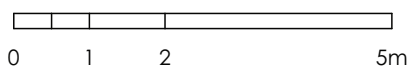
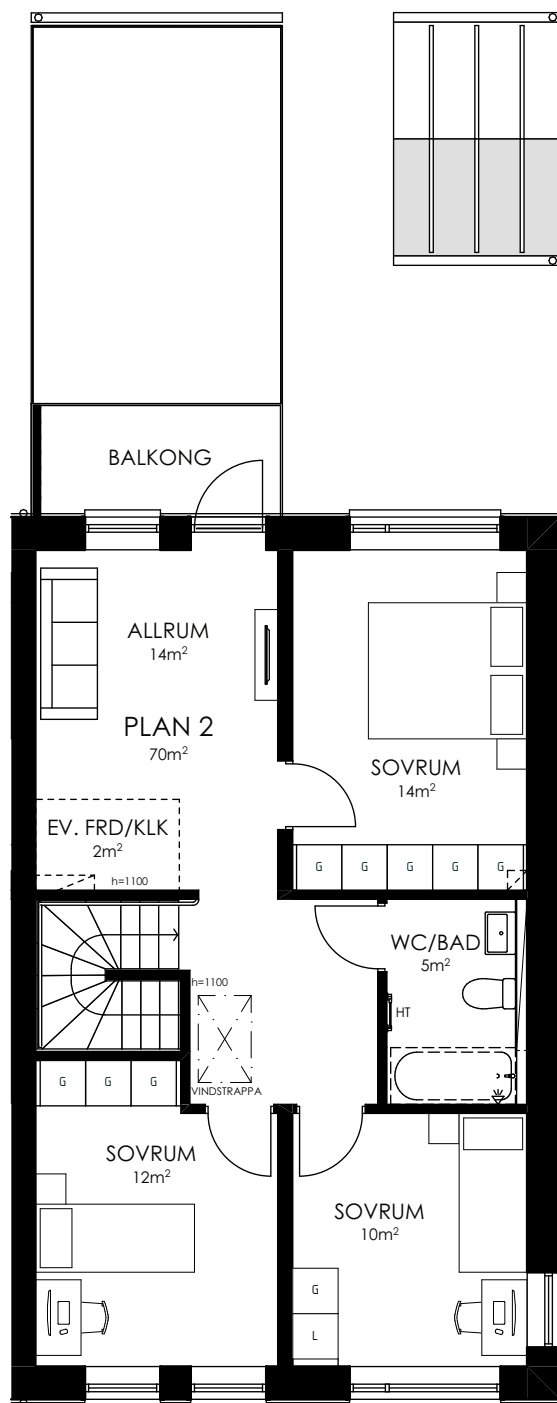
UTEPLATS

ENTRÉPLAN

# Talldungen



HUS: 20  
PLAN: 2  
5 ROK, CA 140 KVM  
TOMTAREA: 457 KVM  
SKALA 1:100



ORIENTERINGSFIGUR 2021-03-29

PLAN 2